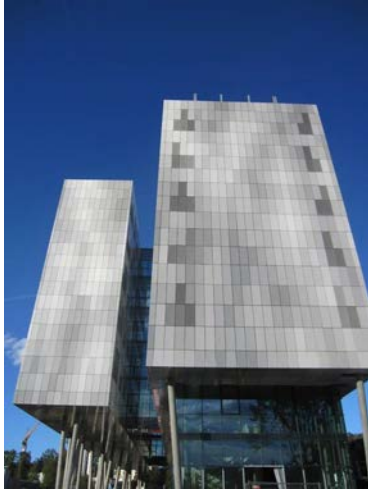


DIRECTIONS TO THE BBMRI-ERIC HEADQUARTER



The BBMRI-ERIC Headquarter is located in the 6th floor of the ZWT building, the Centre for Knowledge and Technology Transfer in Medicine (picture to your left):

BBMRI-ERIC
Neue Stiftingtalstrasse 2/B/6
8010 Graz
AUSTRIA

In case of emergencies, please call: +43 316 349917-0

Office hours: 09:00 – 12:00 & 13:00 – 17:00

AIRPORT GRAZ – BBMRI-ERIC HEADQUARTER

By taxi:

The taxi rank is right outside the passenger terminal, right next to the arrival area. If no taxi is available, either ask the ground personnel for help or call directly to +43 316 878, +43 316 889 or +43 316 2801. Regularly, the ride takes about 25-30 minutes at costs of approximately €25,00. Most taxi drivers take credit cards, but it is advised to ask before starting the ride.

By car:

Parking facilities: In “Tiefgarage Eingangszentrum” some parking spots can be reserved free of charge for BBMRI-ERIC. Please inform the Headquarter beforehand if a space would be required. See map below. Please note that the “Parkhaus Stiftingtalstrasse” is not free of charge.



AIRPORT – CENTRAL TRAIN STATION

By train:

The train station is located about 5-10 walking minutes from the passenger terminal. Take the train no. S5 (direction “Graz Hauptbahnhof” – Central Train Station) and get off at “Graz Hauptbahnhof”. Train tickets have to be bought prior to the ride at the ticket vending machine on the platform for €2,20 (single ticket) or €5,00 (day ticket).



By bus:

The bus stop is right outside the passenger terminal. Take the bus no. 630 or 631 (direction “Graz Hauptbahnhof” – Central Train Station) and get off at “Graz Hauptbahnhof”. Bus tickets can be bought directly from the bus driver. Single ticket: €2,20, day ticket: €5,00.



How to proceed from the Central Train Station to the BBMRI-ERIC Headquarter, see below...

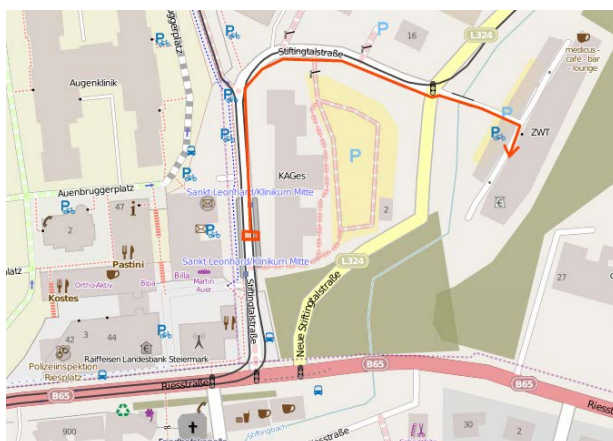
CENTRAL TRAIN STATION – BBMRI-ERIC HEADQUARTER

By taxi:

The taxi rank is right in front of the building. If no taxi is available, ask the station personnel for help or call directly one of the following numbers +43 316 878, +43 316 889 or +43 316 2801. During regular traffic, the ride takes about 20 minutes at costs of approximately €15,00.

By tram:

Take tram no. 7 (direction “LKH Med Uni/Klinikum Nord”). Get off at the stop “St.Leonhard/Klinikum Mitte”, follow the road “Stiftingtalstraße” until the traffic lights, there you can already see the ZWT building. The ride takes about 20 minutes at costs of €2,20 for a single ticket, or €5,00 for a day ticket.



They can be bought at a vending machine inside the tram. Keep small change handy.

