



**BBMRI-ERIC**

Biobanking and  
BioMolecular resources  
Research Infrastructure

## How to join BBMRI-ERIC

Markus Pasterk, Administrative Director

Split, October 6-7, 2014

[www.bbmri-eric.eu](http://www.bbmri-eric.eu)

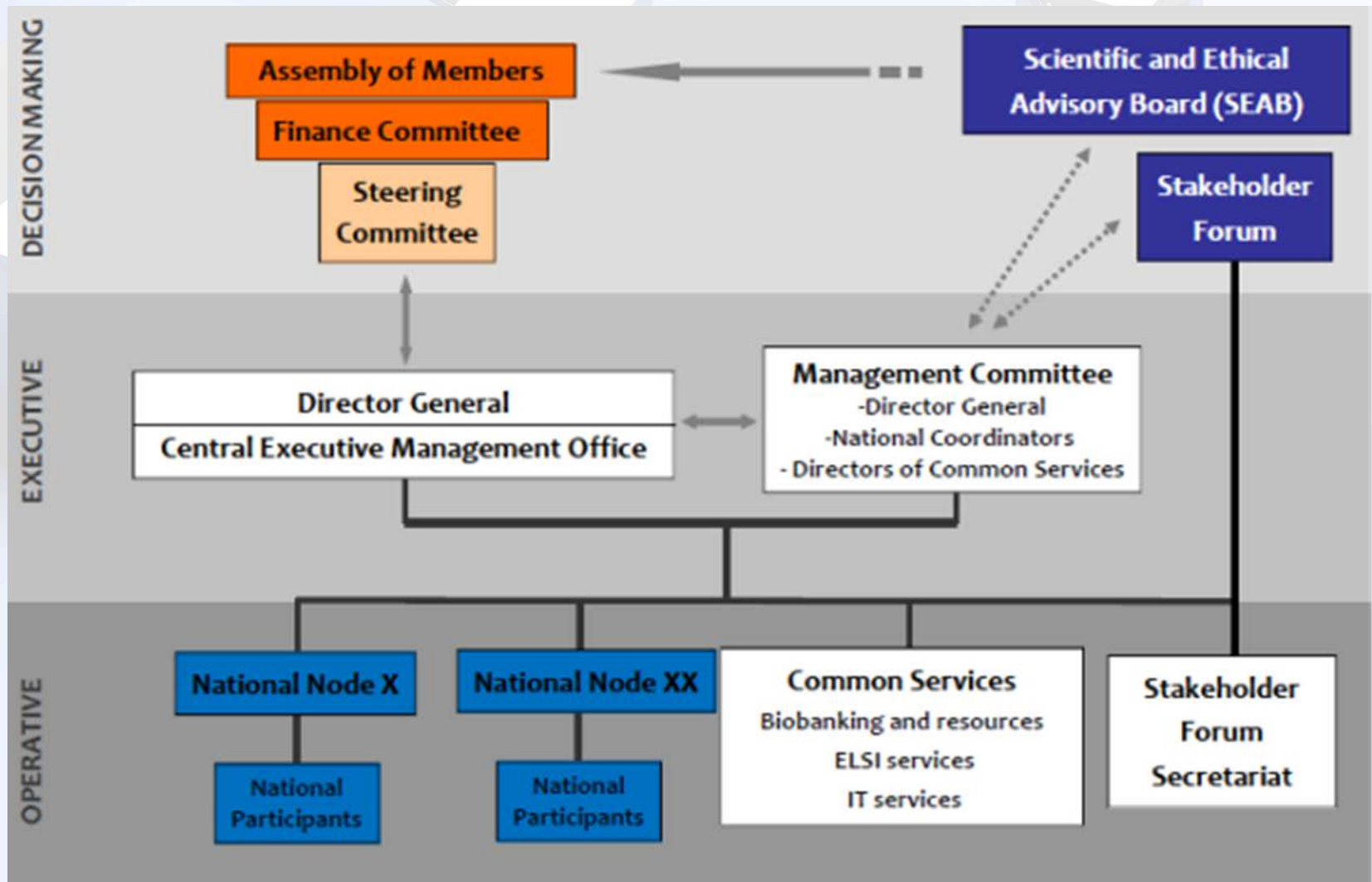
# What is the legal basis for BBMRI-ERIC?

- BBMRI-ERIC's legal structure is called European Research Infrastructure Consortium – or ERIC.
- Based on the “COUNCIL REGULATION (EC) No 723/2009 of 25 June 2009 on the Community legal framework for a European Research Infrastructure Consortium (ERIC) amended recently through COUNCIL REGULATION (EU) No 1261/2013 of 2 December 2013

# Statutes – the backbone of BBMRI-ERIC

The Statutes of BBMRI-ERIC were decided for implementation by the European Commission on 22 November 2013, published in the Official Journal of the EU on the 30 November and came into force on December 3, 2013 (2013/701/EU).

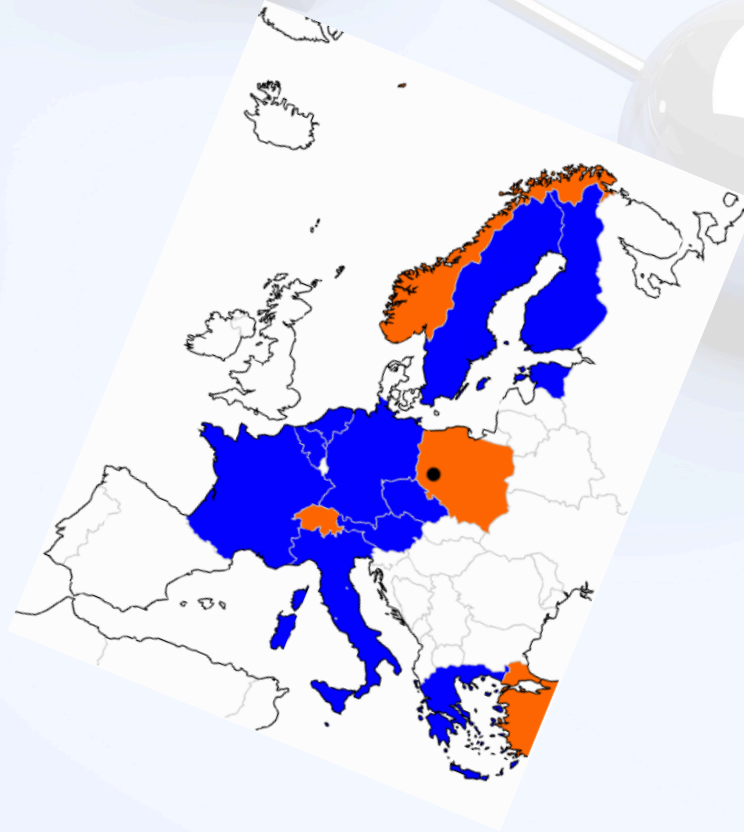
# BBMRI-ERIC Governance Structure



# BBMRI-ERIC Membership

## Founding Members of BBMRI-ERIC

Austria  
Belgium  
Czech Republic  
Estonia  
Finland  
France  
Germany  
Greece  
Italy  
Malta  
Netherlands  
Sweden



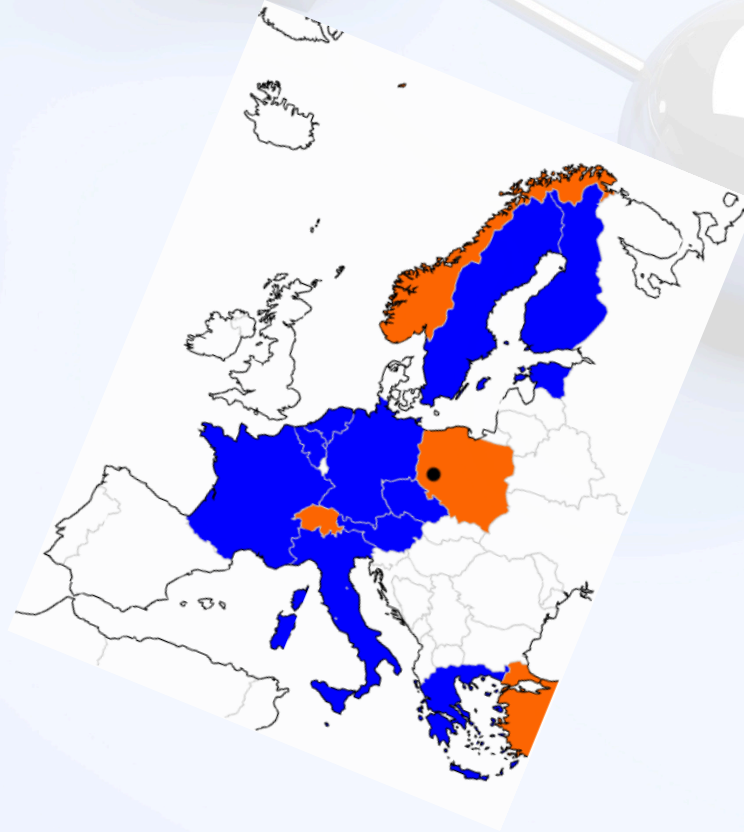
## Official Observers of BBMRI-ERIC

Norway  
Poland  
Switzerland  
Turkey  
IARC

# BBMRI-ERIC future development

## Members of BBMRI-ERIC

Austria  
Belgium  
Czech Republic  
Estonia  
Finland  
France  
Germany  
Greece  
Italy  
Malta  
Netherlands  
Norway  
Sweden  
Poland  
United Kingdom



## Observers of BBMRI-ERIC

Luxembourg  
Switzerland  
Turkey  
IARC

# BBMRI-ERIC participation process

- Membership is open for Countries, not Scientists nor Academic Institutions;
- The competent authorities - mostly the Ministry responsible for Science and/or Research – will need to apply formally for either Membership or Observership
- Part of the application is an outline of a description of the National Biobanking landscape:
  - The Government need to nominate a National Coordinator; and
  - Nominate representatives in The Assembly of Members and the Finance Committee

# Who can join?

Member States, third countries as well as intergovernmental organisations may become members of BBMRI-ERIC at any time, subject to approval by the Assembly of Members according to the principles laid down in Article 11(8)(b).



# Responsibilities of Members

- (a) provide access, within the applicable legal and ethical framework, to BBMRI-ERIC Partner Biobanks, biological and biomolecular resources and/or associated data under a common set of standards and conditions as further specified in the BBMRI-ERIC Partner Charter and approved by the Assembly of Members;
- (b) establish a National/Organisational Node and appoint a National/Organisational Coordinator; [Member countries establish a National Node and appoint a National Coordinator; in case an intergovernmental organisation becomes a Member, it will establish an Organisational Node and appoint an Organisational Coordinator];

# Responsibilities of Members

- (c) ensure coordination of Partner Biobanks via National/Organisational Nodes that will facilitate access to biological and biomolecular resources and associated data;
- (d) where appropriate, make investments in infrastructure in support of BBMRI-ERIC;
- (e) contribute to capacity development in the field of biobanking;
- (f) support the primary purpose of BBMRI-ERIC and the implementation of the BBMRI-ERIC Work Programme.

# Observer

- (1) Observers of BBMRI-ERIC are Member States of the EU, associated countries and third countries as defined in Article 9 (1) ERIC Regulation and intergovernmental organisations that have applied to become Observers.
- (2) Observer status is granted for a maximum period of three years subject to an approval of the Assembly of Members as laid down in Article 10.5. After the three year period, Observers shall either apply for membership or withdraw from the BBMRI-ERIC, unless the Assembly of Members decides otherwise.

# Finance and Funding

The BBMRI-ERIC budget shall consist of:

- (a) financial contributions of Members and Observers;
- (b) contributions by the Host Member State and the hosting countries of Common Services;
- (c) other income.

# How much does it cost?

The mandatory contributions by the Members and Observers and the contributions by the hosting countries for the Central Executive Management Office as well as for Common Services which are laid down within the budget section of the BBMRI-ERIC annual Work Programme.

As detailed in Annex 2, these contributions depend on the population size of the country and on its economic status. The actual size of the joint BBMRI-ERIC budget will be determined annually by the Assembly of Members and thereafter divided between Members and Observers as outlined in Annex 2

# National Nodes

The National Nodes are funded by the respective Member Countries. The BBMRI-ERIC Business Plan lists the minimal requirements for the set-up of the National Nodes. Each National Node has to have a Director (National Coordinator), appointed by an appropriate authority of the Member State.

The National Node Director coordinates the participation of national biobanks in BBMRI-ERIC (through signing of a Partner Charter, annex 1) and serves as a member of the BBMRI-ERIC Management Committee chaired by the Director General.

# Partner Charter

- The BBMRI-ERIC Partner Charter defines the most important cornerstones for the participation of biobanks or biological resource centres (Partner) that are associated with BBMRI-ERIC to foster scientific excellence, guarantee interoperability, and compliance with ethical and legal requirements.
- The Partner Charter is binding for any Partner of the BBMRI-ERIC and shall be agreed between national BBMRI-ERIC nodes and the Partners.
- Participation of a Partner in BBMRI-ERIC is non-exclusive and has no effect on any activity of a Partner outside of BBMRI-ERIC.

# Partner Charter Principles

Primacy

Access policy

Data protection and management policy

Informed Consent

Infrastructure and Management

Quality Management

Reporting

Charges



# Budget 2014

2014						
Member	av. GDP [Mio €]	% GDP total	base contribution	variable share of residual costs acc. to % GDP	total MS contribution	share of total budget (%)
Austria	307.004	3,38	25.000 €	36.292	61.292 €	4,38
Belgium	373.881	4,14	25.000 €	44.433	69.435 €	4,96
Czech Republic	152.926	1,68	25.000 €	18.078	43.078 €	3,08
Estonia	17.415	0,19	20.000 €	2.059	22.059 €	1,58
Finland	192.341	2,12	25.000 €	22.761	47.761 €	3,41
France	2.032.296	22,38	25.000 €	240.246	265.246 €	18,95
Germany	2.666.400	29,37	25.000 €	313.207	340.207 €	24,31
Greece	193.749	2,13	25.000 €	22.904	47.904 €	3,42
Italy	1.565.916	17,25	25.000 €	185.114	210.114 €	15,01
Luxembourg						
Malta	6.830	0,08	20.000 €	807	20.807 €	1,49
Netherlands	599.338	6,6	25.000 €	70.850	95.850 €	6,85
Norway 30% of GDP	116.660	1,28	7.500 €	13.791	21.291 €	1,52
Poland 30% of GDP	114.361	1,26	7.500 €	13.319	21.019 €	1,5
Sweden	407.714	4,49	25.000 €	48.198	73.198 €	5,23
Switzerland 30% of GDP	147.312	1,62	7.500 €	17.414	24.914 €	1,78
United Kingdom						
Turkey 30% of GDP	183.590	2,02	7.500 €	21.703	29.203 €	2,09
IARC			6.000 €		6.000 €	0,43
<b>total</b>	<b>9079933</b>	<b>100.00</b>	<b>326.000 €</b>	<b>1073378</b>	<b>1.399.378 €</b>	<b>100.00</b>

# Gross domestic product at market prices

At current prices

Millions of euro (from 1.1.1999)/Millions of ECU (up to 31.12.1998)

geo	time	2002	2003	2004	2005	2006	2007	2008	2009	2010	2011	2012	2013
<b>EU (28 countries)</b>		9983702.9	10151453.4	10658018.5	11128703.2	11764658.1	12473648.9	12548545.7	11815747.7	12337029.4	12711725.5	12970558.9	13071397.7
<b>EU (27 countries)</b>		9955536.7	10121206.6	10625013.6	11092673.1	11724923.5	12430268.5	12501007.4	11770989.4	12292605.9	12667534.5	12926877.1	13028037.0
<b>Euro area (changing composition)</b>		7256148.3	7466324.4	7771786.9	8048123.7	8455403.6	8938314.2	9162363.9	8907495.4	9153226.9	9424277.3	9483561.5	9574446.8
<b>Euro area (17 countries)</b>		7330228.3	7546845.7	7859959.0	8145054.6	8564224.0	9030671.4	9243012.4	8921465.2	9167598.0	9424277.3	9483561.5	9574446.8
<b>Belgium</b>		268620.0	276157.0	291287.0	303435.0	318829.0	335815.0	346375.0	340669.0	355740.0	369259.0	375881.0	381401.0
<b>Bulgaria</b>		17026.9	18374.4	20387.9	23255.8	26476.7	30772.4	35430.5	34932.8	36052.4	38504.9	39927.0	39940.3
<b>Czech Republic</b>		83350.5	84409.6	91849.5	104628.8	118290.8	131908.6	154269.7	142197.0	155486.0	149932.0	152925.6	149387.4
<b>Denmark</b>		18474.6	188500.3	197069.9	207366.9	218747.4	227533.9	235133.0	223575.8	236334.1	240487.1	245252.0	249234.2
<b>Germany</b>		2132200.0	2147500.0	2195700.0	2224400.0	2313900.0	2428500.0	2473800.0	2374200.0	2495000.0	2609900.0	2666400.0	2737600.0
<b>Estonia</b>		7776.3	8718.9	9685.3	11181.7	13390.8	16069.4	16235.1	13969.7	14371.1	16216.4	17415.1	18434.7
<b>Ireland</b>		130717.1	140635.1	150024.4	162896.8	177573.5	189654.7	180249.5	158096.7	162599.7	162599.7	163938.3	:
<b>Greece</b>		156614.3	172431.8	185265.7	193049.7	208622.3	223160.1	233197.7	231081.2	222151.5	208531.7	193347.0	182054.2
<b>Spain</b>		729258.0	783082.0	841294.0	909298.0	985547.0	1053161.0	1087788.0	1046894.0	1045620.0	1046327.0	1029002.0	:
<b>France</b>		1542928.3	1587902.6	1655571.6	1718047.2	1798115.5	1886792.1	1933195.0	1885763.0	1936720.0	2001398.0	2032296.8	2059272.0
<b>Croatia</b>		28166.2	30246.7	33004.9	36030.1	39734.6	43380.4	47538.3	44778.3	44423.4	44191.0	43681.8	43313.0
<b>Italy</b>		1301873.0	1341850.1	1397728.3	1436379.5	1493031.3	1554198.9	1575143.9	1510695.1	1551885.6	1579946.4	1568911.6	1560023.8
<b>Cyprus</b>		11081.1	11654.2	12596.0	13598.2	14670.5	15901.5	17157.1	16853.5	17406.0	17878.0	17720.2	16503.7
<b>Latvia</b>		9815.6	9942.5	11154.6	12927.8	15981.9	21026.5	22899.8	18521.3	18038.9	20211.3	22256.9	23372.1
<b>Lithuania</b>		15133.0	16576.1	18244.8	20999.1	24104.2	28738.8	32414.3	26854.4	27709.7	30958.5	32939.8	34800.6
<b>Luxembourg</b>		23981.6	25822.1	27444.5	30269.5	33914.1	37498.8	37371.5	35575.2	39302.6	41729.7	42917.8	:
<b>Hungary</b>		70461.9	73883.0	82114.8	88765.5	99589.9	99422.8	105535.8	91415.4	96243.0	98920.6	96968.3	98071.3
<b>Malta</b>		4653.7	4639.9	4669.9	4930.9	5206.7	5575.4	5963.5	6448.8	6893.9	6880.4	7186.4	:
<b>Netherlands</b>		465214.0	478945.0	491184.0	513407.0	540216.0	571773.0	594481.0	573235.0	586789.0	599047.0	599338.0	:
<b>Austria</b>		220529.2	224996.0	234707.8	245243.4	259034.5	274019.8	282744.2	276228.0	285165.3	299240.4	307003.8	313196.7
<b>Poland</b>		209617.4	191643.8	204236.5	244420.1	272088.9	311001.7	363175.3	310681.4	354616.1	370850.6	381204.1	388746.6
<b>Portugal</b>		140566.8	143471.7	149312.5	154268.7	160855.4	169319.2	171983.1	168529.2	171262.6	171126.2	165107.5	165853.7
<b>Romania</b>		48614.9	52576.5	61063.9	79801.9	97751.0	124728.5	139765.4	118196.0	124327.7	131478.0	131578.9	142821.9
<b>Slovenia</b>		24597.1	25819.2	27227.5	28730.9	31050.7	34593.6	37244.4	35420.2	35484.6	36150.0	35318.6	35274.9
<b>Slovakia</b>		25971.7	29489.2	33994.6	38489.1	44501.7	54810.8	64413.5	62794.4	65897.0	68974.2	71096.0	72134.1
<b>Finland</b>		143646.0	145531.0	152266.0	157429.0	165765.0	179830.0	185670.0	172318.0	178724.0	188744.0	192350.0	193443.0
<b>Sweden</b>		266739.8	278914.0	291634.1	298353.3	318170.8	337944.2	333255.7	292472.1	349945.1	385450.7	407820.3	420088.3
<b>United Kingdom</b>		1719805.0	1659740.7	1787298.5	1867129.3	1979497.7	2086519.9	1836125.5	1590858.0	1731809.0	1770909.6	1932701.9	:
<b>Iceland</b>		9473.8	9711.4	10674.1	13111.9	13315.9	14932.4	10292.3	8675.3	9467.5	10087.2	10572.7	11000.3
<b>Liechtenstein</b>		2856.4	2718.4	2782.4	2942.9	3188.7	3362.4	3467.1	3246.0	3940.0	4182.1	:	:
<b>Norway</b>		204073.6	198943.1	209423.5	244582.1	271001.2	287712.2	311284.9	272958.8	317862.4	352982.8	389148.5	384747.1
<b>Switzerland</b>		304557.3	296195.1	301430.1	309428.4	322993.1	329214.4	357724.8	367133.5	414884.1	474689.2	491040.4	489978.1
<b>Montenegro</b>		1360.4	1510.1	1669.8	1815.0	2149.0	2680.5	3085.6	2981.0	3103.9	3234.1	3148.9	:
<b>Former Yugoslav Republic of Macedonia, the</b>		4000.9	4217.4	4442.0	4813.5	5230.6	5966.5	6662.6	6702.4	7056.5	7478.7	7454.4	:
<b>Serbia</b>		16024.3	17289.5	18993.6	20285.3	23327.4	28473.9	32678.9	28951.9	27967.8	31472.4	29801.0	:
<b>Turkey</b>		243440.2	268330.7	314584.4	386936.8	419232.1	471972.2	498601.7	440367.3	550362.8	555100.2	611967.2	:
<b>United States</b>		11611886.6	10176980.2	9869764.5	10526002.7	11036874.8	10565705.9	10008362.8	10336894.2	11283322.0	11159339.1	12643680.0	12651908.7
<b>Japan</b>		4227909.5	3808924.2	3746841.0	3682155.6	3469983.6	3181241.6	3287696.3	3614660.0	4149900.2	4247573.9	4622666.6	3690017.7

-: not available b=break in time series

Source of Data: Eurostat

Last update: 21.03.2014

Date of extraction: 24 Mar 2014 22:32:18 MET

Hyperlink to the table: <http://ecp.eurostat.ec.europa.eu/gm/table.do?tab=table&init=1&plugin=1&language=en&pcode=tec00001>

General Disclaimer of the EC website: [http://ec.europa.eu/geninfo/legal\\_notices\\_en.htm](http://ec.europa.eu/geninfo/legal_notices_en.htm)

Code: tec00001

# Gross domestic product at market prices

At current prices

Millions of euro (from 1.1.1999)/Millions of ECU (up to 31.12.1998)

geo	time	2002	2003	2004	2005	2006	2007	2008	2009	2010	2011	2012	2013
<b>EU (28 countries)</b>		9983702.9	10151453.4	10658018.5	11128703.2	11764658.1	12473648.9	12548545.7	11815747.7	12337029.4	12711725.5	12970558.9	13071397.7
<b>EU (27 countries)</b>		9955536.7	10121206.6	10625013.6	11092673.1	11724923.5	12430268.5	12501007.4	11770989.4	12292605.9	12667534.5	12926877.1	13028037.0
<b>Euro area (changing composition)</b>		7256148.3	7466324.4	7771786.9	8048123.7	8455403.6	8938314.2	9162363.9	8907495.4	9153226.9	9424277.3	9483561.5	9574446.8
<b>Euro area (17 countries)</b>		7330228.3	7546845.7	7859959.0	8145054.6	8564224.0	9030671.4	9243012.4	8921465.2	9167598.0	9424277.3	9483561.5	9574446.8
<b>Belgium</b>		268620.0	276157.0	291287.0	303435.0	318829.0	335815.0	346375.0	340669.0	355740.0	369259.0	375881.0	381401.0
<b>Bulgaria</b>		17026.9	18374.4	20387.9	23255.8	26476.7	30772.4	35430.5	34932.8	36052.4	38504.9	39927.0	39940.3
<b>Czech Republic</b>		83350.5	84409.6	91849.5	104628.8	118290.8	131908.6	154269.7	142197.0	149932.0	155486.0	159225.6	149387.4
<b>Denmark</b>		18474.6	18850.3	197069.9	207366.9	218747.4	227533.9	235133.0	223575.8	236334.1	240487.1	245252.0	249234.2
<b>Germany</b>		2132200.0	2147500.0	2195700.0	2224400.0	2313900.0	2428500.0	2473800.0	2374200.0	2495000.0	2609900.0	2666400.0	2737600.0
<b>Estonia</b>		7776.3	8718.9	9685.3	11181.7	13390.8	16069.4	16235.1	13969.7	14371.1	16216.4	17415.1	18434.7
<b>Ireland</b>		130717.1	140635.1	150024.4	162896.8	177573.5	189654.7	180249.5	162283.5	158096.7	162599.7	163938.3	:
<b>Greece</b>		156614.3	172431.8	185265.7	193049.7	208622.3	223160.1	233197.7	231081.2	222151.5	208531.7	193347.0	182054.2
<b>Spain</b>		729258.0	783082.0	841294.0	909298.0	985547.0	1053161.0	1087788.0	1046894.0	1045620.0	1046327.0	1029002.0	:
<b>France</b>		1510299.0	1507602.0	1533071.0	1718047.2	1789119.5	1880782.1	1880185.0	1885783.0	1928720.0	2001398.0	2032298.8	2059272.0
<b>Croatia</b>		28166.2	30246.7	33004.9	36030.1	39734.6	43380.4	47538.3	44778.3	44423.4	44191.0	43681.8	43313.0
<b>Italy</b>		1301873.0	1341850.1	1397728.3	1436379.5	1493031.3	1554198.9	1575143.9	1519895.1	1551885.6	1579048.4	1590011.0	1600023.8
<b>Cyprus</b>		11081.1	11654.2	12596.0	13598.2	14670.5	15901.5	17157.1	16853.5	17406.0	17878.0	17720.2	16503.7
<b>Latvia</b>		9815.6	9942.5	11154.6	12927.8	15981.9	21026.5	22899.8	18521.3	18038.9	20211.3	22256.9	23372.1
<b>Lithuania</b>		15133.0	16576.1	18244.8	20999.1	24104.2	28738.8	32414.3	26854.4	27709.7	30958.5	32399.8	34800.6
<b>Luxembourg</b>		23981.6	25822.1	27444.5	30269.5	33914.1	37498.8	37371.5	35575.2	39302.6	41729.7	42917.8	:
<b>Hungary</b>		70461.9	73883.0	82114.8	88765.5	99589.9	99422.8	105535.8	91415.4	96243.0	98920.6	96968.3	98071.3
<b>Malta</b>		4653.7	4639.9	4669.9	4930.9	5206.7	5575.4	5963.5	5963.0	6448.8	6893.9	6880.4	7186.4
<b>Netherlands</b>		465214.0	478945.0	491184.0	513407.0	540216.0	571773.0	594481.0	573235.0	586789.0	599047.0	599338.0	:
<b>Austria</b>		220529.2	224996.0	234707.8	245243.4	259034.5	274019.8	282744.2	276228.0	285165.3	299240.4	307003.8	313196.7
<b>Poland</b>		209617.4	191643.8	204236.5	244420.1	272088.9	311001.7	363175.3	310681.4	354616.1	370850.6	381204.1	388746.6
<b>Portugal</b>		140566.8	143471.7	149312.5	154268.7	160855.4	169319.2	171983.1	168529.2	171126.2	165107.5	165107.5	165853.7
<b>Romania</b>		48614.9	52576.5	61063.9	79801.9	97751.0	124728.5	139765.4	118196.0	124327.7	131478.0	131578.9	142821.9
<b>Slovenia</b>		24597.1	25819.2	27227.5	28730.9	31050.7	34593.6	37244.4	35420.2	35484.6	36150.0	35318.6	35274.9
<b>Slovakia</b>		25971.7	29489.2	33994.6	38489.1	44501.7	54810.8	64413.5	62794.4	65897.0	68974.2	71096.0	72134.1
<b>Finland</b>		143646.0	145531.0	152266.0	157429.0	165765.0	179830.0	185670.0	172318.0	178724.0	188744.0	192350.0	193443.0
<b>Sweden</b>		266739.8	278914.0	291634.1	298353.3	318170.8	337944.2	333255.7	292472.1	349945.1	385450.7	407820.3	420088.3
<b>United Kingdom</b>		1719805.0	1659740.7	1787298.5	1867129.3	1979497.7	2086519.9	1836125.5	1590858.0	1731809.0	1770909.6	1932701.9	:
<b>Iceland</b>		9473.8	9711.4	10674.1	13111.9	13315.9	14932.4	10292.3	8675.3	9467.5	10087.2	10572.7	11000.3
<b>Liechtenstein</b>		2856.4	2718.4	2782.4	2942.9	3188.7	3362.4	3467.1	3246.0	3940.0	4182.1	:	:
<b>Norway</b>		204073.6	198943.1	209423.5	244582.1	271001.2	287712.2	311284.9	272958.8	317862.4	352982.8	389148.5	384747.1
<b>Switzerland</b>		304557.3	296195.1	301430.1	309428.4	322993.1	329214.4	357724.8	367133.5	414884.1	474689.2	491040.4	489978.1
<b>Montenegro</b>		1360.4	1510.1	1669.8	1815.0	2149.0	2680.5	3085.6	2981.0	3103.9	3234.1	3148.9	:
<b>Former Yugoslav Republic of Macedonia, the</b>		4000.9	4217.4	4442.0	4813.5	5230.6	5966.5	6662.6	6702.4	7056.5	7478.7	7454.4	:
<b>Serbia</b>		16024.3	17289.5	18993.6	20285.3	23327.4	28473.9	32678.9	28951.9	27967.8	31472.4	29801.0	:
<b>Turkey</b>		243440.2	268330.7	314584.4	386936.8	419232.1	471972.2	498601.7	440367.3	550362.8	555100.2	611967.2	:
<b>United States</b>		11611886.6	10176980.2	9869764.5	10526002.7	11036874.8	10565705.9	10008362.8	10336894.2	11283322.0	11159339.1	12643680.0	12651908.7
<b>Japan</b>		4227909.5	3808924.2	3746841.0	3682155.6	3469983.6	3181241.6	3287696.3	3614660.0	4149900.2	4247573.9	4622666.6	3690017.7

-: not available b=break in time series

Source of Data: Eurostat

Last update: 21.03.2014

Date of extraction: 24 Mar 2014 22:32:18 MET

Hyperlink to the table: <http://ecp.eurostat.ec.europa.eu/gm/table.do?tab=table&init=1&plugin=1&language=en&pcode=tec00001>

General Disclaimer of the EC website: [http://ec.europa.eu/geninfo/legal\\_notices\\_en.htm](http://ec.europa.eu/geninfo/legal_notices_en.htm)

Code: tec00001

# Budget 2014

2014						
Member	av. GDP [Mio €]	% GDP total	base contribution	variable share of residual costs acc. to % GDP	total MS contribution	share of total budget (%)
Austria	307.004	3,38	25.000 €	36.292	61.292 €	4,38
Belgium	373.881	4,14	25.000 €	44.433	69.435 €	4,96
Czech Republic	152.926	1,68	25.000 €	18.078	43.078 €	3,08
Estonia	17.415	0,19	20.000 €	2.059	22.059 €	1,58
Finland	192.341	2,12	25.000 €	22.761	47.761 €	3,41
France	2.032.296	22,38	25.000 €	240.246	265.246 €	18,93
Germany	2.666.400	29,37	25.000 €	313.207	340.207 €	24,31
Greece	193.749	2,13	25.000 €	22.904	47.904 €	3,42
Italy	1.565.916	17,25	25.000 €	185.114	210.114 €	15,01
Luxembourg						
Malta	6.830	0,08	20.000 €	807	20.807 €	1,49
Netherlands	599.338	6,6	25.000 €	70.850	95.850 €	6,83
Norway 30% of GDP	116.660	1,28	7.500 €	13.791	21.291 €	1,52
Poland 30% of GDP	114.361	1,26	7.500 €	13.319	21.019 €	1,5
Sweden	407.714	4,49	25.000 €	48.198	73.198 €	5,23
Switzerland 30% of GDP	147.312	1,62	7.500 €	17.414	24.914 €	1,78
United Kingdom						
Turkey 30% of GDP	183.590	2,02	7.500 €	21.703	29.203 €	2,09
IARC			6.000 €		6.000 €	0,43
<b>total</b>	<b>9079933</b>	<b>100.00</b>	<b>326.000 €</b>	<b>1073378</b>	<b>1.399.378 €</b>	<b>100.00</b>

# Documents

You can find all public documents on our website:

<http://www.bbmri-eric.eu>

- Report of BBMRI preparatory phase
- Business Plan
- Guidance document
- Work Programme and Budget

# Thank you!