



BBMRI-ERIC

Biobanking and
BioMolecular resources
Research Infrastructure

ANNUAL AND FINANCIAL REPORT 2014 ON ACTIVITIES AND ACHIEVEMENTS OF BBMRI-ERIC

TABLE OF CONTENTS

4	Abbreviations
7	Introduction

9 ANNUAL REPORT 2014

11	Aggregated Milestone Plan of Major BBMRI-ERIC Deliverables in 2014
12	Overview on Each Work Stream
12	1. WORK PLAN: Central Executive Management Office in Graz
13	2. WORK PLAN: Biobank Outreach
16	3. WORK PLAN: Common Services for BBMRI-ERIC
18	4. WORK PLAN: Start Pan-European and International Fundraising Effort for BBMRI-ERIC
18	5. WORK PLAN: Quality
19	6. WORK PLAN: Expert Centres
19	7. WORK PLAN: e-Infrastructure
20	8. WORK PLAN: Finish Work from BBMRI-PP
21	Report on Ongoing BBMRI-ERIC Activities in H2020 / Other Funding Opportunities

23 FINANCIAL REPORT 2014

25	Introduction
26	Financial Highlights
27	Procurement and Tax Exemption
28	Detailed Annual Accountings
29	Report of the External Auditor
31	Annex
46	Imprint

ABBREVIATIONS

AoM	Assembly of Members
ADOPT BBMRI-ERIC	Implementation and operation of the gateway for health into the Biobanking and Biomolecular resources Research Infrastructure - European Research Infrastructure Consortium
BBMRI.at	Biobanking and Biomolecular resources Research Infrastructure Austria
BBMRI.be	Biobanking and Biomolecular resources Research Infrastructure Belgium
BBMRI.cz	Biobanking and Biomolecular resources Research Infrastructure Czech Republic
BBMRI.de	Biobanking and Biomolecular resources Research Infrastructure Germany
BBMRI.ee	Biobanking and Biomolecular resources Research Infrastructure Estonia
BBMRI-ERIC	Biobanking and Biomolecular resources Research Infrastructure - European Research Infrastructure Consortium
BBMRI.fi	Biobanking and Biomolecular resources Research Infrastructure Finland
BBMRI.fr	Biobanking and Biomolecular resources Research Infrastructure France
BBMRI.gr	Biobanking and Biomolecular resources Research Infrastructure Greece
BBMRI.it	Biobanking and Biomolecular resources Research Infrastructure Italy
BBMRI.mt	Biobanking and Biomolecular resources Research Infrastructure Malta
BBMRI.nl	Biobanking and Biomolecular resources Research Infrastructure The Netherlands
BBMRI.se	Biobanking and Biomolecular resources Research Infrastructure Sweden
BBMRI.uk	Biobanking and Biomolecular resources Research Infrastructure United Kingdom
BBMRI.no	Biobanking and Biomolecular resources Research Infrastructure Norway
BBMRI.pl	Biobanking and Biomolecular resources Research Infrastructure Poland
BBMRI.ch	Biobanking and Biomolecular resources Research Infrastructure Switzerland
BBMRI.tr	Biobanking and Biomolecular resources Research Infrastructure Turkey
IARC	International Agency for Research on Cancer
BBMRI-LPC	Biobanking and Biomolecular resources Research Infrastructure - Large Prospective Cohorts
BCNet	Biobank and Cohort Building Network
BMS	The ESFRI Biological and Medical Research Infrastructures
CoBiBa	Connecting BioBanks

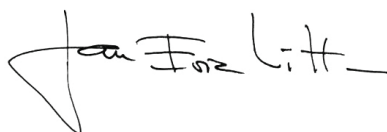
CORBEL	COordinated Research infrastructures Building Enduring Life-science services
CS	Common Service
EATRIS	European Infrastructure for Translational Medicine
EFPIA	European Federation of Pharmaceutical Industries Associations
ELSI	Ethical, Legal, and Social Implications
ERIC	European Research Infrastructure Consortium
ESBB	European, Middle Eastern & African Society for Biopreservation & Biobanking
ESFRI	European Strategy Forum on Research Infrastructures
E&T	Education and Training
EVAg	European Virus Archive goes global
FC	Finance Committee
FP7	7th Framework Programme
H2020	Horizon 2020
HOBB2015	HandsOn: Biobanks Conference 2015
HQ	Headquarters
INNORARE	INNOvation and Research Acceleration for RarE diseases
ISBER	International Society for Biological and Environmental Repositories
IT	Information Technology
MC	Management Committee
MIABIS	Minimum Information About Biobank data Sharing
MoU	Memorandum of Understanding
PR	Public Relations
P ³ G	Public Population Project in Genomics and Society
1Q	First Quarter
RI	Research Infrastructure
RItrain	Research Infrastructures training programme
SEAB	Scientific and Ethical Advisory Board
WP	Work Programme

INTRODUCTION

On 3 December 2013, the pan-European **Biobanking and BioMolecular resources Research Infrastructure (BBMRI)** was officially awarded the Community legal framework for a **European Research Infrastructure Consortium (ERIC)**. Seventeen Member States and one International Organisation have joined forces in establishing BBMRI-ERIC, most lately the accession of the United Kingdom.

This report gives a detailed overview of the activities and achievements of BBMRI-ERIC in comparison to its Work Programme as approved by the Assembly of Members in its 4th session on 27 April 2015. It includes the financial report as well as the report of the external auditor Ernst & Young.

The report concludes that BBMRI-ERIC had completed an intense and successful first year of its existence. BBMRI-ERIC finished the year with a solid account and concluded its 22 Work Streams of the 8 Work Plans of the Work Programme 2014 on time, with the exception of the delay in staff recruitment and the setup of the Scientific and Ethical Advisory Board.



Prof. Jan-Eric Litton
Director General BBMRI-ERIC

30 July 2015



ANNUAL REPORT 2014



BBMRI-ERIC

Biobanking and
BioMolecular resources
Research Infrastructure



4th Session of BBMRI-ERIC's AoM on 27 April 2015 Vienna, Austria



In May 2015, the HQ celebrates its 1st year in the new office building in Graz, Austria

AGGREGATED MILESTONE PLAN OF MAJOR BBMRI-ERIC DELIVERABLES IN 2014

Comparison of Target and Actual Completion

The main deliverables for 2014 are defined in the Work Programme 2014, page 8. Here is an aggregated comparison of target and actual details to the milestone plan (see Annex for details):

- **Launch Central Executive Management Office Graz**
Completed.
- **Update Catalogue of European Biobanks**
On schedule.
- **Launch Common Service ELSI**
Completed.
- **Launch Common Service IT**
More time/resources required than expected.
- **Plan Stakeholder's Forum Secretariat**
On schedule.
- **Participate in H2020 calls as partner and/or coordinator**
Exceeding plan.
- **Approve Partner Charter**
Completed.
- **Arrange for self-evaluation of BBMRI-ERIC biobanks**
Delayed.
- **Host HandsOn: Biobanks Conference in Helsinki, Finland**
Completed.
- **Finish the Communication Platform of BBMRI-ERIC**
Completed.
- **Engage with BBMRI-ERIC Stakeholders in building pan-European Relationships**
Exceeding plan.
- **Start building a European Curricula on Education & Training for Biobankers**
On schedule.
- **Hold the Scientific Retreat in Tartu, Estonia**
Completed.
- **Set up BBMRI-ERIC Webinars**
Completed.
- **Publish „Biobanks Europe Newsletter“**
Delayed until 1Q 2015.
- **Publish the Minimum Information about Biobank data Sharing (MIABIS)**
Completed.
- **Update Biobank Lexicon**
More time required than expected.



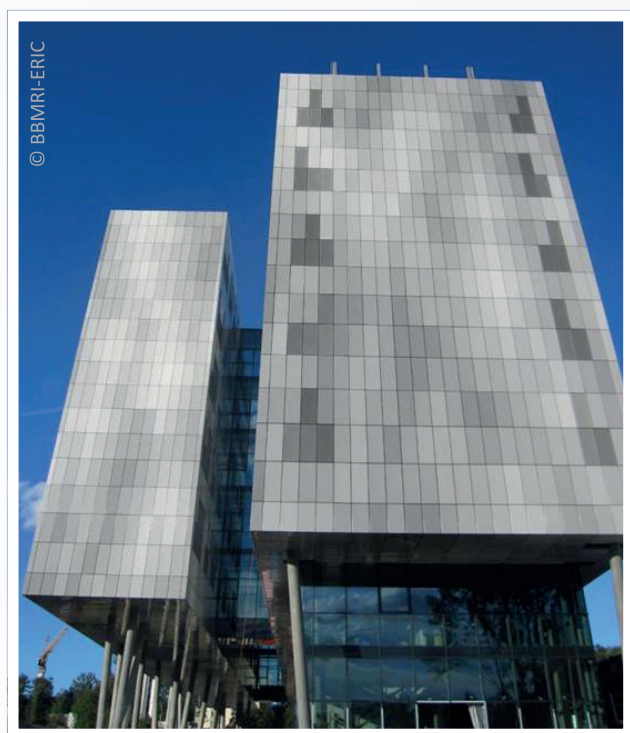
Former Austrian Federal Minister for Science and Research (2011-2013) Prof. Dr. Karlheinz Töchterle at the BBMRI-ERIC Inauguration Conference on 16 September 2013 in Graz, Austria

OVERVIEW ON EACH WORK STREAM

Completed (not to be continued), clarify that all other reports on Work Streams are to be found in the Work Programme for 2015

The following section uses the same structure (numbering) as the Work Programme 2014. Furthermore, several Working Groups have been set up to do special tasks or prepare for a Work Stream. Some of these Working Groups are presented in this overview.

1. WORK PLAN: CENTRAL EXECUTIVE MANAGEMENT OFFICE IN GRAZ



BBMRI-ERIC Headquarters at Neue Stiftingtalstrasse 2/B/6, 8010 Graz, Austria

- Explore subletting office space during the first months
- An Operations Handbook
- Bank account and working consulting contract for general accounting and payroll accounting
- Project Management support system for the Working Groups, Holding sessions of the Assembly of Members (AoM), Financial Committee (FC), Management Committee (MC) and the Common Services (CS)
- Development of an archive system, the preliminary Annual Report 2014 and the Work Programme 2015 and provisional WP 2016-2017
- Successful initiation of 2 Common Services within ERIC structures, and
- A plan for the Stakeholder Forum Secretariat

1.1 Work Stream: Set-up of the Central Executive Management Office - HQ

The deliverables of this Work Stream were:

- Staff contracts signed
- A fully furnished and functioning Central Executive Management Office (HQ)

This Work Stream is completed for the start-up phase of the BBMRI-ERIC HQ and is not included in the Work Programme 2015. The composition of the SEAB has been discussed with the MC and its approval has been scheduled for the 4th session of the AoM in April 2015.

2. WORK PLAN: BIOBANK OUTREACH



BBMRI-ERIC HOBB 2014 on 24-25 September 2014
in Helsinki, Finland

2.1 Work Stream: HandsOn: Biobanks (HOBB)

HOBB is a yearly event of BBMRI-ERIC hosted by a National Node; therefore, it will be a part of the Work Programme 2015. The HOBB 2014 in Helsinki had the motto „From Biobanks to Medical Innovations“ (<http://handsonbiobanks.org/edition-2014>).

2.2 Work Stream: A Communication Platform for BBMRI-ERIC

This Work Stream had the following goals:

- Creating a consistent, modern and memorable corporate design by building on the BBMRI Preparatory Phase logo
- Creating templates for Word, PowerPoint, scientific posters, etc. for BBMRI-ERIC and National Nodes
- Customising business cards, letter paper, notepads, etc.
- Designing information material such as brochures and flyers
- Setting up the website with the new design and updated content for both the general public and the biobanking community
- Integrating or relinking all existing web pages of the BBMRI Preparatory Phase to the new website
- Setting up an intranet website to exchange documents and information
- Creating a shared space for images, graphs, etc.
- Engaging with the public via new (social) media, etc.
- Liaising with the biobanking community and stakeholders via the website, mailing lists, newsletter, newflash, and the social media
- Liaising with other key actors (e.g., BMS RIs, ESBB, P³G, etc.)
- Coordinating public engagement and PR activities among HQ and the National Nodes

This Work Stream has been completed. It will not be included in the Work Programme 2015. Keeping materials, tools and information up to date, will be an on-going task.



On 12 March 2009 „Time Magazine“ calls biobanks one of ten ideas changing the world right now.

2.3 Work Stream: Scientific Retreat with the BBMRI-ERIC National Nodes

On 8 September 2014, the 1st Scientific Retreat „Thinking out of the Box“ was generously hosted by BBMRI.ee in Tartu, Estonia. Two round table discussions focused on the key factors of success for BBMRI-ERIC, shaped the Work Programme 2015 and allowed for a first brainstorming on the forthcoming H2020-INFRADEV-1-2015-1 call application. The programme also included a visit to the Estonian Biobank as well as a social dinner and city tour. The Scientific Retreat allowed for discussions beyond the daily routine and resulted in the internal White Paper 2014 highlighting a joint vision for BBMRI-ERIC.

BBMRI-ERIC schedules a yearly Scientific Retreat. It is seen as an important tool for shaping BBMRI-ERIC's future Work Programmes as well as to ensure a joint understanding of the mission of BBMRI-ERIC among all its Member States and National Nodes. Hence, it will be a key Work Stream of the Work Programme 2015.

2.4 Work Stream: BBMRI-ERIC Webinars

Webinars are seen as an important tool to reach out on a pan-European scale informing and promoting BBMRI-ERIC tools and activities. The first webinar followed a three-stage procedure:

1. Testing: Following several test webinars, the first webinar was held for introducing the intranet to the MC on 2 July 2014. During autumn 2014, the system was improved to accommodate larger audiences and to allow recording.
2. Dissemination: via BBMRI-ERIC e-Newsflash and communication channels of P³G, BMS ESFRI etc.
3. Launching: The 1st scientific webinar „Minimum

Information About Biobank data Sharing - MIABIS 2.0“ was advertised during 4Q 2014 and took place on 22 January 2015. It attracted 48 participants.

This Work Stream has been successfully launched. Since it is a continuous effort of the HQ and the National Node Directors, it will not be an explicit part of the Work Programme 2015.

2.5 Work Stream: „Biobanks Europe Newsletter“

The „Biobanks Europe Newsletter“ addresses recent developments, current challenges, and achievements of BBMRI-ERIC, its Common Services, the Stakeholder's Forum, the National and Organisational Nodes in further detail.

The newsletter is available via online subscription (along with all our other news services such as the monthly e-Newsflash) and it will help us to gather the email addresses or mailing addresses of potential users of BBMRI-ERIC services and to keep stakeholders and users informed. The content focuses on the achievements of BBMRI-ERIC as well as the National Nodes. Topics of common interest should be explored with P³G and ISBER as well as other Research Infrastructures (e.g., advertising conferences, topics of shared priority, etc.), wherever appropriate. It is planned to produce four issues of the newsletter per year.

The design, outline and structure of Biobanks Europe were completed in 2014. The first structure of the „Biobanks Europe Newsletter“ were published 1Q 2015. It will focus on BBMRI-ERIC's H2020 participation, the Common Service ELSI, BBMRI.it and the HOBBS 2015 in Milan, Italy. Henceforth, it will be a continuous effort of the HQ's activities.



The Director General of BBMRI-ERIC, Prof. Jan-Eric Litton on 28 May 2014 at the 4th Annual Biobank Meeting in Shanghai, China

2.6 Work Stream: Start Building Effective Pan-European Relationships with a Broad Range of Stakeholders

The mission of this Work Stream was:

- To present BBMRI-ERIC at international events
- To identify the national and international success stories where biobanks/epidemiology have been used for major discoveries of significant public health impact in Europe and internationally
- To identify new areas for specific public health interventions
- To coordinate with National Nodes and Member States to raise awareness at the stakeholder and policy maker levels
- To explore BBMRI-ERIC membership with China
- To attract new Member States; Luxemburg and the UK have been invited to all key meetings of BBMRI-ERIC including the Assembly of Members; Informal contacts have been established with Denmark, Portugal, Latvia and Spain. The guiding document on how to become a member of BBM-RI-ERIC has been finalised.

This Work Stream was a success as senior staff of BBMRI-ERIC were invited to talk at more than forty events in Europe and abroad (a detailed list can be found in the Annex). Additionally, BBMRI-ERIC was

invited to biobanking events worldwide (e.g., China, USA or Jordan). The most important activity during 2014 was to inform the various Stakeholders about BBMRI-ERIC as a novel tool for the governance of biobanking activities. This Work Stream will be an on-going activity for the years to come. Hence, it will not be set up as a specific Work Stream for 2015.

2.7 Work Stream: Set-up a Working Party to Develop a European Biobanking Education and Training Strategy

In order to provide this Work Stream with an adequate basis, a survey of existing education and training activities is to be done and made available. The needs for additional E&T activities will be identified and skill sets will be defined. BBMRI-ERIC will set up a Working Party with representatives of all interested countries and institutions to:

- Map the existing E&T landscape of Europe in field of biobanking
- Define the skill sets of biobanking employees including Manager, Operator, Quality Manager, IT systems operator, ethicists, project nurses etc.
- Develop European Curricula with interested Universities for the different levels
- If requested, coordinate providers of short courses in the field for Continuous Professional Training

It was foreseeable from the start that not all of these goals would be reached in 2014, in part because funds of successful H2020 applications were not yet available. BBMRI-ERIC is the coordinator of the H2020 project RItrain as well as Work Package leader and co-lead in the cluster application CORBEL. Hence, it will be included in the Work Programme 2015, and is intended to continue for a number of years.

3. WORK PLAN: COMMON SERVICES FOR BBMRI-ERIC

BBMRI-ERIC Common Services are key elements of the infrastructure because they provide top-level expertise, services and tools in specific areas of biobanking to the biobanking community and biobank users. Common Services are placed under the responsibility of the Director General and are managed by a Director jointly appointed by the Director General and the host Member State where the Common Service is located. It is intended that Common Services should be jointly funded by BBMRI-ERIC and the Member State hosting the facility. On behalf of BBMRI-ERIC, such funding decisions are made by the Assembly of Members on the basis of scientific excellence and cost efficacy as part of the Work Programme jointly funded by the Members.

The work for setting up new Common Services will continue and will be a key part of the Work Programme 2015.



International Meeting on ELSI: Expectations and Proposals from National Nodes on 4 March 2014 in Toulouse, France

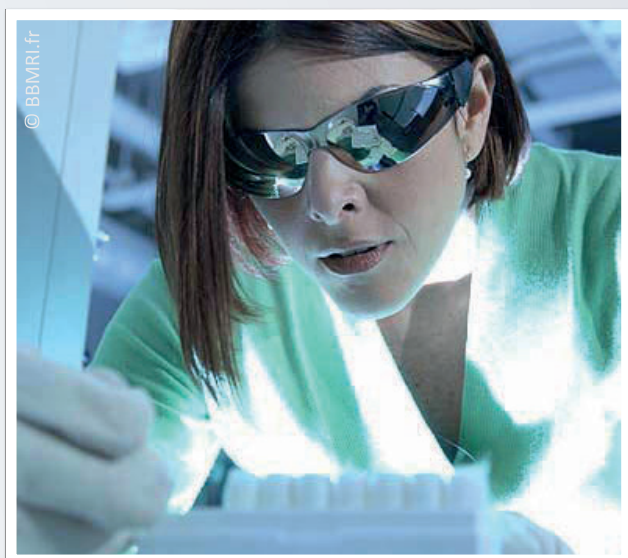
3.1 Work Stream: Common Service ELSI

The Common Service ELSI gathers expertise on ethical, legal and social issues relevant to biobanking, makes it available to facilitate and support cross-border access to biobank resources and data, and will monitor and contribute to the further development of standards and guidelines on these issues.

The call text was published on 30 April 2014 and the deadline was extended on 5 June 2014. As requested, one application reflecting the pan-European scale and expertise of BBMRI-ERIC was received and the call closed on 29 July 2014. Three international reviewers assessed the application and requested slight changes with which the applicants complied. The AoM approved the revised application in its third session in November 2014. The Common Service ELSI was launched in February 2015. It will be included as a Work Stream in the Work Programme 2015 and the years to come.

3.2 Work Stream: Common Service IT

The Common Service IT is a project to coordinate the development and deployment of the IT infrastructure BBMRI-ERIC needs for managing and sharing biobanking data. Following three preparatory meetings (2 June 2014, Vienna/Austria; 15 September 2014, Berlin/Germany and 26-27 February 2015, Milan/Italy) to prepare the Common Service IT tender and in the context of writing the ADOPT BBMRI-ERIC proposal, it became evident that some more time was needed to prepare the Common Service IT to meet the requirements of all BBMRI-ERIC Members. It is planned to publish the tender after the 4th session of the AoM by the end of April 2015 and launch the Common Service IT at the end of the year.



Biobanques in France, BBMRL.fr

3.3 Work Stream: Working Group on Rare Diseases

Biobanking is essential for research on rare diseases because it allows researchers to find and study more cases of the diseases they are working on.

The Working Group for Rare Diseases will continue and will be a part of the Work Programme 2015. How to develop the work of the Working Group was a topic of discussion at the 1st Scientific Retreat/5th MC Meeting in Tartu, Estonia. It was agreed that the work of the group should be intensified. As a result of the negative outcome of the INNORARE proposal, the group will now have to be restructured.

3.4 Work Stream: Planning for a Stakeholder Forum Secretariat

BBMRI's Stakeholder Forum in the Preparatory Phase brought together researchers from academia and industry, patient organisations, research administrators and ethicists and lawyers from all over Europe.

Plans have been made for Belgium to host the BBMRI-ERIC Stakeholder Forum Secretariat, which should be operational in 2015. A proposal of Belgium was made in preparatory talks, and was further discussed by the Director General with representatives of the Belgian National Node on 28 October 2014 in Brussels. In accordance with the decision of the 8th meeting of the MC, it was put on the agenda for the 4th session of the AoM.

3.5 Work Stream: Biobanking of Infectious Materials

Biobanking includes materials related to infectious diseases, which require special procedures, especially to ensure biosafety (safety of the people working with the samples and protection against accidental release of infectious organisms) and biosecurity (security against malevolent use of infectious material).

Working Group 12 for Infectious Diseases will continue based on the MoU signed with EVAg and is a key part of the Work Programme 2015 with the purpose to potentially integrate EVAg as a Common Service into the BBMRI-ERIC structure. The EVAg Kick-off meeting took place on 1-2 April 2015 at Pasteur Institute in Paris, France.



Sampels at BBMRI.nl and Leiden University Medical Center

4. WORK PLAN: START PAN-EUROPEAN AND INTERNATIONAL FUNDRAISING EFFORT FOR BBMRI-ERIC

4.1 Work Stream: Fundraising Efforts

BBMRI-ERIC participated in more project applications than expected. BBMRI-ERIC was very active to secure additional funding for several activities (e.g., training and education, catalogue, Common Service ELSI) through project applications such as Rltrain or CORBEL. In some cases, BBMRI-ERIC was contacted on very short notice to participate in an application. The Working Group for H2020 (Working Group 1) will continue as part of the Work Programme 2015. How to further streamline and improve communication about planned and ongoing activities/proposals was a topic of discussion during the 1st Scientific Retreat/5th Management Committee Meeting in Tartu, Estonia.

5. WORK PLAN: QUALITY



Tumor Biobank in BBMRI.be

5.1 Work Stream: Quality Management System (QMS)

Quality management systems are essential in biobanking to ensure the quality and reliability of information that meet the highest standards. For effective cross-border use of biobanking resources, these systems also have to have a certain level of harmonisation and compatibility. Currently, there are several international efforts taking place. They must be evaluated and practical administrative applications must be proposed, discussed and shared within the community.

This Work Stream has been delayed due to the fact that the AoM postponed the position of the Quality Manager. The recruitment process was completed only in November 2014. Hence, it will be a part of the Work Programme 2015.

5.2 Work Stream: Partner Charter

Working Group 2 was established to assess if the Partner Charter draft version of 18 June 2012 (as published in the Business Plan) was accurate or needed to be updated. The Working Group concluded that the draft Partner Charter should be laid before the AoM without any changes. The MC unanimously accepted this suggestion. The AoM approved the Partner Charter during its second session.

This Work Stream has been completed and will not be a part of the Work Programme 2015.

5.3 Self-Evaluation

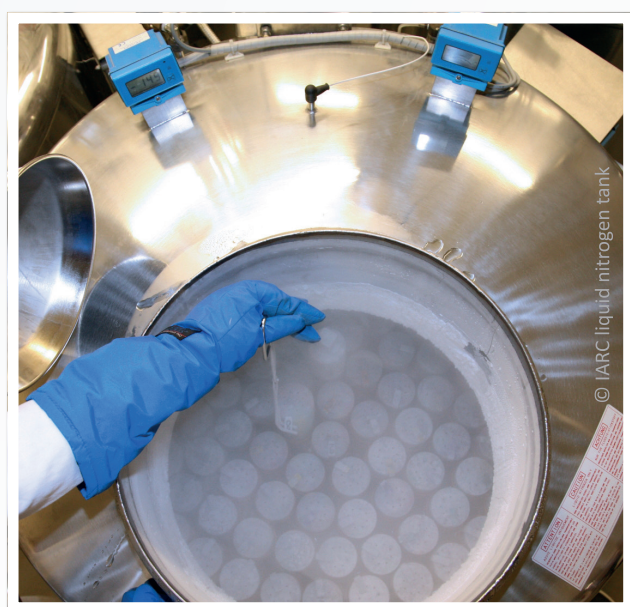
In order to identify quality-oriented European biobanks able to provide high quality samples and related information to the European and international

research community, and to comply with the BBMRI-ERIC principles, an online self-evaluation tool will be designed, taking into account all parameters for compliance with the Partner Charter (primacy, access policy, data protection and management policy, informed consent, infrastructure and management, quality management, charges).

This Work Stream has been delayed waiting for the English translation of the document. ISBER is also doing a self-evaluation, which also needs to be taken into consideration. The Quality Manager (appointed in November 2014) will be key to follow up on the recent developments. It will be a part of the Work Programme 2015.

6. WORK PLAN: EXPERT CENTRES

6.1 Work Stream: Planning for a Structure for BBMRI-ERIC Expert Centres



IARC Biobank

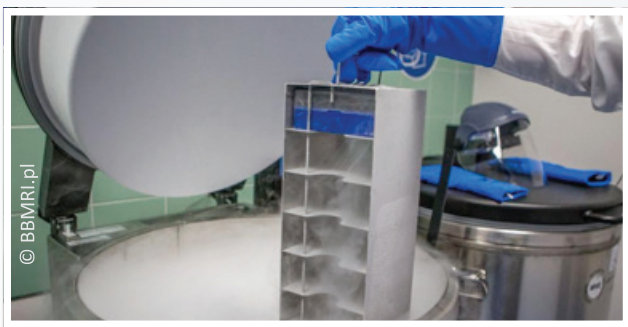
The first goal of this Work Stream is to map the current activities in establishing Expert Centres in Europe. Due to the fact that the Expert Centre model development is part of several H2020 applications, as well as an ongoing activity in the BBMRI-LPC project, this will be a part of the Work Programme 2015. One of the main objectives will be to develop a guiding document on how to set up such Expert Centres, including a list of criteria for certification.

7. WORK PLAN: E-INFRASTRUCTURE

So far, most biobank infrastructure initiatives have developed as organisational networking, pure harmonisation efforts in terms of specific data sets, or standardising operational procedures for material collection. While this is important, the full potential of an infrastructure will only be realised if a biobank e-infrastructure is constructed with a BBMRI-ERIC gateway.

7.1 Work Stream: Catalogue of European Biobanks

The MIABIS data model has been updated to version 2.0. After that, the Catalogue of European Biobanks of the Preparatory Phase was updated and released with the MIABIS layer and with the data cube. In order to ensure the support of sub-catalogues, the BBMRI-LPC catalogue has been published with 20 participating cohorts. It contains detailed information on samples and data. The subsequent development of the Catalogue of European Biobanks means that we can build a new catalogue (Directory 1.0) in 2015. Based on the priority ranking of the MC in 2014 and results of the 1st Scientific Retreat in Tartu, Estonia, this Work Stream will be a key part of the Work Programme 2015.



BBMRI.pl - Sample storage tank with liquid nitrogen

7.2 Work Stream: BiobankCloud

The FP7 BiobankCloud project provides solutions for private clouds to solve the problems of secure storage and efficient analysis of massive amounts of biomedical data. The consortium of BiobankCloud foresees BBMRI-ERIC as participant. Providing suitable cloud solutions will be a part of the upcoming work for the Common Service IT in 2015.

7.3 Work Stream: Connecting BioBanks-CoBiBa

The CoBiBa is a proposed IT project. It aims to enhance the effective sharing and synthesis of information and collections of biological material of high quality, thereby addressing the need for very large sample sizes and helping to promote collaborative European genetic, epidemiological, and clinical research. Also, it aims at avoiding the expensive mistakes and inefficiencies that can arise when individual initiatives repeatedly “reinvent the wheel,” thereby saving funders and researchers a lot of time and money and improving the return on investments in collections of high quality. It furthermore aims to significantly reduce the time and effort for collecting data and material for medical research projects („Time to Lab”) and thus increases the competitiveness of medical research in Europe. Finally, it promotes communication within and between major biobank initiatives in Euro-

pe, thereby helping to overcome existing fragmentation of health research. The concept of the proposed CoBiBa project can only be realised when additional funding becomes available. This Work Stream could become part of the Common Service IT in 2016/17.

8. WORK PLAN: FINISH WORK FROM BBMRI-PP

Some of the work started during the BBMRI Preparatory Phase still needs to be completed. This Work Plan is developed to fulfil this task.

8.1 Work Stream: MIABIS

The MIABIS provides a minimal data set for sharing information relevant to biobanking activities and has been published on the BBMRI-ERIC website (WIKI). Moreover, the MIABIS Working Group has been enlarged to include further IT experts in order to work on different extensions of MIABIS.

The results of this Work Stream will be a part of the new catalogue (Directory 1.0) and ultimately of the Common Service IT.

8.2 Work Stream: Biobank Lexicon

Here, the goal is to update and finish a new Biobank Lexicon for the usage of the global biobank community. Its current version is translated into 10 EU languages. During the last months, interest in this lexicon has been expressed outside the EU, for example in Arabic countries as well as China, the US and Canada (P³G).

It will be part of the Work Programme 2015.

REPORT ON ONGOING BBMRI-ERIC ACTIVITIES IN H2020 / OTHER FUNDING OPPORTUNITIES.

What proposals is BBMRI involved in? For each proposal: What is the main objective of the proposal? How will it benefit BBMRI (brief info)? What is the role of BBMRI-ERIC: lead or partner? How much money was requested in total & what is the amount requested by BBMRI? When is the funding decision due? When would the grant become effective? What would the funding period be?

By the end of 2014, BBMRI-ERIC was involved in 34 research project applications.

Report on any other important matters

- Work on ensuring effective communication with National Nodes and individual biobanks has been increased and is identified as a key factor for the success of BBMRI-ERIC.
- BBMRI-ERIC was promoted to stakeholders at more than 40 conferences, workshops and meetings (biobankers, policy makers, research infrastructures, industry, patient organisations, etc).
- Informal preparatory meetings to join BBMRI-ERIC as new members took place with representatives of Luxemburg, the United Kingdom, Croatia, Denmark, Latvia, and Portugal.
- BBMRI-ERIC seeks collaboration with international initiatives (such as BCNet) and other Research Infrastructures. To date, MoUs were signed with EATRIS, EVAg and P³G to specify joint collaboration.
- The Austrian Research Promotion Agency selected BBMRI-ERIC as a success story for research infrastructures.
- The European Commission selected the BBMRI Preparatory Phase as a success story.
- Subsequent engagement with policy makers at the European level made it evident that the majority, even of key players are unaware of the ERIC legal framework and/or research infrastructures and their potential in contrast to research projects.
- A Seminar „Biobanking: a gateway for health“ was held in Brussels on 18 November 2014. As a follow-up, collaboration with EFPIA improved and will lead to joint activities to react in a concerted manner to the General Data Protection Regulation.
- On 7 October 2014, a press meeting was held in London to promote BBMRI-ERIC. It aimed at making a wider audience aware of the existence of BBMRI-ERIC.
- During 2014 a local scientific Lecture Series was set up jointly with BBMRI-ERIC, BBMRI.at and Academia Europea.



FINANCIAL REPORT 2014



BBMRI-ERIC

Biobanking and
BioMolecular resources
Research Infrastructure

INTRODUCTION

The Annual Report on Budgetary and Financial Management of BBMRI-ERIC for the calendar year 2014 including the Financial Statement (thereafter Annual Financial Report 2014) and the Report of the External Auditor are submitted in accordance with Article 10 of the BBMRI-ERIC Statutes to the Assembly of Members for approval.

This was done by firstly sending the draft report to the Steering Committee for discussion on 27 February 2015 and on 27 March 2015, for discussion and recommendation.

As BBMRI-ERIC exists only since since 3 December 2013 and the Assembly of Members constituted the governance bodies of BBMRI-ERIC during its 1st Session on 22 January 2014, this is the first financial report.

The Annual Financial Report 2014 and all accounts have been audited by the External Auditor Ernst & Young Vienna as nominated by the Assembly of Members during their 3rd Session on 11 November 2014. The Report of the External Auditor is included here.

The Annual Financial Report 2014 highlights the financial status of BBMRI-ERIC despite some minor unexpected losses and expenses.

FINANCIAL HIGHLIGHTS

Core Budget

During the 2nd Session of the Assembly of Members on 29 April 2014 the Budget for 2014 was approved at € 1,544,682. This included Membership contributions of € 1,399,379 plus € 145,303 as Hosting Country contributions. In contrast to these earnings, expenses were foreseen of € 1,340,479 for the HQs and € 204,203 for Common Services. The estimated expenditures of HQ included among others also a Reserve of € 213,316.

The annual accounts have shown a total of earnings of € 1,441,927 and expenditures of € 1,128,152.

	expected 2014	actual 2014
Earnings	€ 1,544,682	€ 1,441,927
Membership contributions	€ 1,399,379	€ 1,341,927
Hosting country contributions	€ 145,303	€ 100,000
Expenditures	€ 1,544,682	€ 1,128,152
HQ	€ 1,340,479	€ 1,128,152
Common Services	€ 204,203	€ 0

This leads to net earnings of € 313,775. The overall reason for the lower amount in earnings is due to an unpaid Membership contribution by the Republic of Greece.

Due to the current economic and liquidity situation of Greece, the Director General of BBMRI-ERIC, who is responsible for preparing the financial statements, decided to book 100% allowance for doubtful receivables relating to the already due member fee 2014 from Greece in line with Austria generally accepted accounting principles.

The unpaid 2nd instalment of Belgium, Malta and Turkey leads as well to the lower amount. The details are shown in the tables under section “detailed annual accountings” later. In addition, no Common Service was launched during 2014 and therefore no Hosting Country contributions for those Services needed to be paid.

The major reasons for less expenditures are thus that, firstly, no expenditures were made for Common Services (as mentioned above) and that, secondly, the hiring of staff at HQ had been delayed.

Other Income

During 2014, no additional income was generated. Two FP7 projects allow expenses to be eligible during 2014, namely BioMedBridges and IMI EMTRAIN (for both: BBMRI-ERIC involvement starting day 1 October 2014), but in both cases no expenditures were made.

PROCUREMENT AND TAX EXEMPTION

According to the Statutes (Article 6), BBMRI-ERIC shall treat procurement candidates and tenders equally and without discrimination.

BBMRI-ERIC is following those rules and has invited several tenders for the procurement of the office furniture, which constitutes the biggest investment expenditures during 2014.

The same process was followed in identifying the best internet/phone provider and service provider for local IT development and support as well as certified accountant for accounting, pay roll and financial-legal advice.

In accordance with the ERIC Regulation (Official Journal L 206, 2009), BBMRI-ERIC asked the local tax authorities for tax exemption. This was granted late 2014 and BBMRI-ERIC is now treated as a company in terms of VAT. Local corporate tax is also exempted as well as municipal tax.

The certified accountant has requested for VAT rebate for 2014, which is still pending. Consequently, a potential amount of up to € 45,000 could be regained in the course of the financial year 2015.

DETAILED ANNUAL ACCOUNTINGS

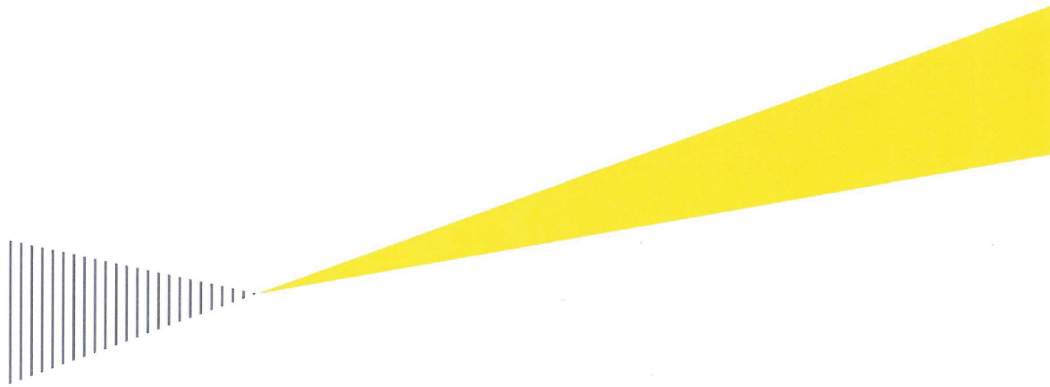
The following table shows BBMRI-ERIC's 2014 earnings, and most importantly expenditures. The information is given in the same format as the budget was approved and contains justification for over or under spending of each individual financial item.

BBMRI-ERIC BUDGET 2014			
<i>Source for budget 2014 expected: document AaM/2/3, discussed at the Assembly of Members 15/04/2014 and presentation of Marlies Poelker @ AaM, 29/04/2014</i>			
	2014 expected (€)	2014 actual (€)	
EARNINGS			
Membership contributions			justification 2014
Austria	61.292	61.292	
Belgium	69.435	60.194	2nd installment missing
Czech Republic	43.078	46.977	
Estonia	22.059	22.059	
Finland	47.761	47.761	
France	265.247	265.247	
Germany	340.207	340.207	
Greece	47.904	0	1st and 2nd installment missing
Italy	210.114	210.114	
Malta	20.807	20.657	2nd installment missing
Netherlands	95.850	95.850	
Norway	21.291	21.291	
Poland	21.019	21.019	
Sweden	73.198	73.198	
Switzerland	24.914	24.914	
Turkey	29.203	25.147	2nd installment missing
IARC	6.000	6.000	
Subtotal	1.399.379	1.341.927	
Hosting country contributions			
Austria, hosting HQ	100.000	100.000	
Hosting country ELSI CS	26.720	0	no income needed as the CS was not setup during 2014
Hosting country IT CS	18.583	0	no income needed as the CS was not setup during 2014
Subtotal	145.303	100.000	
EARNINGS, total	1.544.682	1.441.927	
Expenditures			
Headquarters			justification 2014
Salaries	-531.981	-404.435	some staff started later then expected
fringe benefits	-118.170	-84.420	some staff started later then expected
investment	-116.678	-149.070	higher furniture expenses and reconstruction of the office
rent	-89.034	-139.647	deposit for rent not considered in expected budget calculation 2014, some higher expenses for maintenance
consumables (Verbrauchsmaterial)	-20.000	-12.157	
travel	-121.300	-111.817	
Contracts	-130.000	-197.191	IT consulting during first 8 month without the IT Manager
Other expenditures		-29.416	personnel leasing, expenses in relation to financial transactions, rent compensation, interest earnings for bank balance, default interest
Reserve	-213.316	0	
Subtotal	-1.340.479	-1.128.152	
Common Services			
ELSI	-165.053		no expenses as the CS was not setup during 2014
IT	-38.350		no expenses as the CS was not setup during 2014
Subtotal	-204.203	0	
EXPENDITURES, total	-1.544.682	-1.128.152	
	0	313.775	to be used for: liquidity reserve and reserve for unexpected expenses; some of the insurance expenses for 2014 will need to be covered during 2015 like costs of pension, private health insurance which is only once a year deducted or no insurance certificate for 2014 yet received, vacation provision for not consumed vacation 2014, and to cover losses due to countries not paying the full membership fee.
NET EARNINGS			

REPORT OF THE EXTERNAL AUDITOR

BBMRI-ERIC, Graz

Report on the Audit of the
Financial Statements
as of December 31, 2014



EY
Building a better
working world

Ernst & Young
Wirtschaftsprüfungsgesellschaft m.b.H.

4. AUDITOR'S REPORT

Report on the Financial Statement

We have audited the accompanying financial statements, including the accounting system, of Biobanking and BioMolecular resources Research Infrastructure - European Research Infrastructure Consortium, Graz, for the fiscal year from January 1, 2014 to December 31, 2014. These financial statements comprise the balance sheet as of December 31, 2014, the income statement for the fiscal year ended December 31, 2014, and the notes. Our responsibility and liability as auditor is analogously to Section 275 UGB (liability regulations for the audit of small and medium-sized companies) limited with a total of 2 million Euro towards the Company and towards third parties.

Management's Responsibility for the Financial Statements and for the Accounting System

The Company's management is responsible for the accounting system and for the preparation and fair presentation of these financial statements in accordance with Austrian Generally Accepted Accounting Principles. This responsibility includes: designing, implementing and maintaining internal control relevant to the preparation and fair presentation of financial statements that are free from material misstatement, whether due to fraud or error; selecting and applying appropriate accounting policies; and making accounting estimates that are reasonable in the circumstances.

Auditor's Responsibility and Description of Type and Scope of the Statutory Audit

Our responsibility is to express an opinion on these financial statements based on our audit. We conducted our audit in accordance with laws and regulations applicable in Austria and Austrian Standards on Auditing. Those standards require that we comply with professional guidelines and that we plan and perform the audit to obtain reasonable assurance whether the financial statements are free from material misstatement.

An audit involves performing procedures to obtain audit evidence about the amounts and disclosures in the financial statements. The procedures selected depend on the auditor's judgment, including the assessment of the risks of material misstatement of the financial statements, whether due to fraud or error. In making those risk assessments, the auditor considers internal control relevant to the Company's preparation and fair presentation of the financial statements in order to design audit procedures that are appropriate in the circumstances, but not for the purpose of expressing an opinion on the effectiveness of the Company's internal control. An audit also includes evaluating the appropriateness of accounting policies used and the reasonableness of accounting estimates made by management, as well as evaluating the overall presentation of the financial statements.

We believe that the audit evidence we have obtained is sufficient and appropriate to provide a basis for our audit opinion.

Opinion

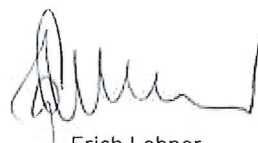
Our audit did not give rise to any objections. In our opinion, which is based on the results of our audit, the financial statements comply with legal requirements and give a true and fair view of the financial position of the Company as of December 31, 2014 and of its financial performance for the fiscal year from January 1, 2014 to December 31, 2014 in accordance with Austrian Generally Accepted Accounting Principles.

Comments on the Management Report

Pursuant to Section 243 (4) UGB the audited company did not prepare a management report.

Vienna, April 10, 2015

Ernst & Young
Wirtschaftsprüfungsgesellschaft m.b.H.



Erich Lehner
Wirtschaftsprüfer/Certified Auditor



Katharina Schrenk
Wirtschaftsprüferin/Certified Auditor

*) Disclosure, publication and duplication of the financial statements together with the auditor's report according to Section 281 (2) UGB in a form not in accordance with statutory requirements and differing from the version audited by us is not permitted. Reference to our audit may not be made without prior written permission from us.

ANNEX

- Performance Comparison by Work Stream (Overview of Goals and Deliverables 2014)
- Overview of Invited Lectures, Talks and Dissemination Activities
- Overview Table of Planned and Actual PM Distribution of BBMRI-ERIC HQ Staff

PERFORMANCE COMPARISON BY WORK STREAM

Overview of Goals and Deliverables 2014

PERFORMANCE COMPARISON BY WORK STREAM													
Performance comparison	WS 1.1 CEMO												
	Deliverable / month of 2014	1	2	3	4	5	6	7	8	9	10	11	12
Target	Fully functioning office												
Actual													
Target	Operations Handbook												
Actual			V1.0								V1.4		
Target	Bank account and consulting contract for general accounting and payroll accounting												
Actual													
Target	Project Management support system for the Working Groups												
Actual								Intranet					
Target	AoM Sessions	AoM#1			AoM#2						AoM#3		
Actual		AoM#1			AoM#2							AoM#3	
Target	FC Sessions	FC#1			FC#2					FC#3			
Actual		FC#1			FC#2					FC#3			
Target	MC Meetings	MC#1	MC#2	MC#3		MC#4	MC#5			MC#6			MC#7
Actual		MC#1	MC#2	MC#3		MC#4	MC#5			MC#6			MC#7
Target	SEAB Meeting												
Actual													
Target	Development of an archive system												
Actual													
Target	Preliminary Annual Report 2014												
Actual											to SC		
Target	Work Programme 2015 and provisional WP 2016--2017												
Actual													
Target	Recruit/appoint Senior Staff, DG and AD												
Actual		GD, AD											
Target	Recruit Support Staff, Secretary (S) and Financial/ Project Assistant (F/PA)												
Actual						S*			F/PA	S			
Target	Recruit Senior Project Manager (SPM)												
Actual		SPM*							SPM				
Target	Recruit IT Manager												
Actual													
Target	Recruit Lawyer												
Actual													
Target	Recruit Quality Manager												
Actual												QM	
Target	Tender for Common Service ELSI												
Actual				prep #1		tender		applic.	review	review	revision	AoM#3	
Target	Tender for Common Service IT												
Actual							prep#1			prep#2			
Target	Plan for Common Service Stakeholder Forum												
Actual							BE offer				prep#1		
Target	Plan for Common Service Rare Diseases												
Actual													

PERFORMANCE COMPARISON BY WORK STREAM

Performance comparison	WS 2.1 HandsOn												
	Deliverable/ month of 2014	1	2	3	4	5	6	7	8	9	10	11	12
Target	Planning of the conference												
Actual													
Target	Decision <i>HandsOn 2015</i> Italy, part of EXPO & prep												
Actual													
Target	Publishing of the <i>HandsOn</i> website												
Actual													
Target	Hold the conference <i>HandsOn 2014 (Helsinki)</i>												
Actual										HOBB			
Target	Prepare <i>HandsOn 2015</i>												
Actual								press r.	website	CD			
Target	Post-produciton of <i>HandsOn 2014</i>												
Actual													
Performance comparison	WS 2.2. Communication												
	Deliverable / month of 2014	1	2	3	4	5	6	7	8	9	10	11	12
Target	Corporate Design (CD) for web and print												
Actual													
Target	Creating templates etc for BBMRI-ERIC and National Nodes												
Actual													
Target	Customising business cards, letter paper, note pads, etc.												
Actual													
Target	Conceptualising information material												
Actual													
Target	Setting up the website with the new design												
Actual			prep		beta			launch					
Target	Finalising posters, brochures, etc												
Actual							ppt	poster	flyer	web	nodes		
Target	Set up Intranet to exchange documents and information												
Actual													
Target	Creating a shared pool of images, graphs etc.												
Actual													
Target	Starting engaging with the public via website and other means												
Actual													
Target	Liaise with others on communication												
Actual													
Target	Content management (intranet and old/new public website, contact database)												
Actual													

PERFORMANCE COMPARISON BY WORK STREAM

Performance comparison	WS 2.3 Retreat												
	Deliverable / month of 2014	1	2	3	4	5	6	7	8	9	10	11	12
Target	Organise Retreat #1												
Actual										Tartu			
Target	Incorporate outcome of meeting into WP 2015												
Actual													
Performance comparison	WS 2.4 Webinars												
	Deliverable / month of 2014	1	2	3	4	5	6	7	8	9	10	11	12
Target	Test webinars												
Actual													
Target	Send invitations												
Actual							Intranet						
Target	Enlist the help of partners												
Actual													
Performance comparison	WS 2.5 Newsletter												
	Deliverable / month of 2014	1	2	3	4	5	6	7	8	9	10	11	12
Target	Graphic layout of the newsletter												
Actual													
Target	Preparing the content												
Actual													
Target	Final layout, editing and printing												
Actual													
Target	Published newsletter												
Actual													
Performance comparison	WS 2.6 Stakeholder												
	Deliverable / month of 2014	1	2	3	4	5	6	7	8	9	10	11	12
Target	Introducing BBMRI-ERIC at national and international meetings												
Actual													
Target	MoU EATRIS-BBMRI-ERIC												
Actual													
Target	MoU EuroBioImaging												
Actual													
Target	Involve Mediterranean countries												
Actual													
Target	Collaborate with other continents and existing initiatives												
Actual													
Target	Meetings with European political opinion leaders												
Actual													

PERFORMANCE COMPARISON BY WORK STREAM

Performance comparison	WS 2.7 E&T WP												
	Deliverable / month of 2014	1	2	3	4	5	6	7	8	9	10	11	12
Target	Map existing E&T landscape												
Actual													
Target	Start defining skill sets for biobankers												
Actual													
Target	Identify interested Universities												
Actual													
Performance comparison	WS 3.1 CS ELSI												
	Deliverable / month of 2014	1	2	3	4	5	6	7	8	9	10	11	12
Target	Identify ELSI experts in Member States												
Actual				prep#1									
Target	Tender for ELSI services												
Actual													
Target	Evaluate the application(s)												
Actual								applic.		review	review		
Target	Prepare decision												
Actual											revision		
Target	AoM decides on the proposal												
Actual												AoM#3	
Target	Contract negotiation with legal partners												
Actual													
Target	Start setting up services												
Actual													
Target	CS ELSI inaugurated												
Actual													
Performance comparison	WS 3.2 CS IT												
	Deliverable / month of 2014	1	2	3	4	5	6	7	8	9	10	11	12
Target	Identify IT experts in Member countries												
Actual													
Target	Preparatory Meeting for Common Service IT												
Actual							#1			#2			
Target	Tender for Common Services IT												
Actual													
Target	Evaluate the application(s)												
Actual													
Target	Prepare decision												
Actual													
Target	AoM decides on the proposal												
Actual													
Target	Contract negotiation with legal partners												
Actual													
Target	Start setting up services (2015-)												
Actual													
Target	CS IT inaugurated (2015-)												
Actual													

PERFORMANCE COMPARISON BY WORK STREAM

Performance comparison	WS 3.3 CS RD												
	Deliverable / month of 2014	1	2	3	4	5	6	7	8	9	10	11	12
Target	Prepare for submission to the deadline for the 2 INFRADEV calls												
Actual													
Target	Prepare structure and objectives of a CS RD (if agreed upon)												
Actual													
Performance comparison	WS 3.4 CS SFS												
	Deliverable / month of 2014	1	2	3	4	5	6	7	8	9	10	11	12
Target	Planning												
Actual													
Target	Identify candidates												
Actual							BE				prep#1		
Target	Planning of content of the Stakeholder Forum Secretariat												
Actual													
Performance comparison	WS 3.5 EVA												
	Deliverable / month of 2014	1	2	3	4	5	6	7	8	9	10	11	12
Target	Specify the Workstream												
Actual													
Performance comparison	WS 4.1 Fundraising												
	Deliverable / month of 2014	1	2	3	4	5	6	7	8	9	10	11	12
Target	Setting up of the WG on H2020												
Actual													
Target	Including ongoing FP7 projects												
Actual			prep								2		
Target	Exchange of ongoing participations & proposal writing												
Actual													
Target	Deadlines for H2020 calls												
Actual				1st stage					PHP	Infra			
Performance comparison	WS 5.1 QUM												
	Deliverable / month of 2014	1	2	3	4	5	6	7	8	9	10	11	12
Target	Define quality management criteria												
Actual													
Target	Harmonisation and standardisation of SOPs												
Actual													
Target	Document quality requirements of the industry												
Actual													
Target	Map current training courses for Quality Managers												
Actual													
Target	Prepare to take over all 5 BRIF Working Groups												
Actual													

PERFORMANCE COMPARISON BY WORK STREAM

Performance comparison	WS 5.2 Partner Charter												
	Deliverable / month of 2014	1	2	3	4	5	6	7	8	9	10	11	12
Target	Preparation of a final draft version												
Actual													
Target	Seeking approval of the AoM												
Actual													
Performance comparison	WS 5.3 Self-Evaluation												
	Deliverable / month of 2014	1	2	3	4	5	6	7	8	9	10	11	12
Target	Self-evaluation questionnaire												
Actual													
Target	Define a standardised method of evaluation												
Actual													
Target	Provide the self-evaluation tool to the National Nodes												
Actual													
Target	Assess the efficacy of this evaluation system												
Actual													
Performance comparison	WS 6.1 Expert Centre												
	Deliverable / month of 2014	1	2	3	4	5	6	7	8	9	10	11	12
Target	Map current activities (see BBMRI-LPC)												
Actual													
Target	Develop a guiding document in collaboration with BBMRI-LPC												
Actual													
Target	Develop a guiding document in collaboration with BBMRI-LPC												
Actual													

PERFORMANCE COMPARISON BY WORK STREAM

Performance comparison	WS 7.1 Biobank Catalogue												
	Deliverable / month of 2014	1	2	3	4	5	6	7	8	9	10	11	12
Target	Planning on catalogue integration												
Actual													
Target	First release												
Actual													
Target	Second release												
Actual													
Performance comparison	WS 7.2 Biobank Cloud												
	Deliverable / month of 2014	1	2	3	4	5	6	7	8	9	10	11	12
Target	Beta version												
Actual													
Target	Operating version (2015)												
Actual													
Performance comparison	WS 7.3 CoBiBa												
	Deliverable / month of 2014	1	2	3	4	5	6	7	8	9	10	11	12
Target	Prepare proposal												
Actual													
Target	Deadline INFRAIA call (expected)												
Actual										no call			
Performance comparison	WS 8.1 MIABIS												
	Deliverable / month of 2014	1	2	3	4	5	6	7	8	9	10	11	12
Target	Specifying document												
Actual													
Target	Publication												
Actual													
Performance comparison	WS 8.2 Lexicon												
	Deliverable / month of 2014	1	2	3	4	5	6	7	8	9	10	11	12
Target	Set up a new Working Group												
Actual													
Target	Update the existing version												
Actual													
Target	Publish the new version												
Actual													

OVERVIEW OF INVITED LECTURES, TALKS AND DISSEMINATION ACTIVITIES

Jan-Eric Litton

13.02.2014

Presentation on BBMRI-ERIC at the EUDAT meeting in Munich, Germany

> <http://www.eudat.eu/events>

28.01.2014

Presentation on BBMRI-ERIC at the eTRIKS meeting in Barcelona, Spain

> <http://www.etriks.org/blog/etriks-2nd-annual-meeting/>

16.01.2014

Presentation on BBMRI-ERIC at the BiobankCloud meeting in Luxembourg, Luxembourg

17.03.2014

Presentation on BBMRI-ERIC at the BCnet in Lyon, France

10.04.2014

Invited talk for the BBMRI Biobank Lexicon at the Establishing the 1st Cancer Biobank in Amman, Jordan

02.04.2014

Invited talk for BBMRI-ERIC and European Cohorts at the BBMRI-LPC meeting in Lyon, France

> <http://www.bbmri-lpc.org/events>

04.04.2014

Presenting “Where are we with BBMRI-ERIC” at the IARC meeting in Lyon, France

06.05.2014

Presenting “BBMRI-ERIC a new governance tool for Biobanking” at the EU ELIXIR meeting in Sandhamn, Sweden

> <http://www.elixir-europe.org/events/heads-nodes-and-node-technical-coordinators-meeting>

20.05.2014

Presenting “BBMRI-ERIC, a new governance tool for Biobanking in Europe” at the ISBER Biobanking Conference in Orlando, USA

> <http://www.isber.org/event/id/315717/ISBER-2014-Annual-Meeting--Exhibits.htm>

21.05.2014

Presenting Financial sustainability of Biobanks at the ISBER Biobanking Conference in Orlando, USA

> <http://www.isber.org/event/id/315717/ISBER-2014-Annual-Meeting--Exhibits.htm>

28.05.2014

Presenting BBMRI-ERIC at the 4th Annual Biobank China 2014 in Shanghai, China

> <http://www.scrnet.org/eindex.asp>

17.06.2014

Presenting “BBMRI-ERIC a new governance tool for Biobanking” at the Biobanks in Poland and Europe meeting in Warsaw, Poland

> <http://www.wum.edu.pl/files/uczelnia/biobankowanie.pdf>

17.09.2014

Presenting BBMRI-ERIC, a new governance tool for Biobanking in Europe at the ClinBio meeting in Berlin, Germany

> http://bbmri-eric.eu/events/-/asset_publisher/wiZaUI5ie56w/content/bbmri-eric-clinical-biobanking-workshop

11.09.2014

Presenting BBMRI-ERIC: Gateway for health at the LifeScience Baltic meeting in Vilnius, Lithuania

> <http://www.lsb2014.com/en/programme/programme/?programme=p2>

24.09.2014

Presenting BBMRI-ERIC HOBBS #3 at the HandsOn: Biobanks Helsinki meeting in Helsinki, Finland
 > <http://www.ncri.org.uk/events/handson-bio-banks-2014>

23.09.2014

Presenting BBMRI-ERIC at the BBMRI-LPC Forum in Tallin, Estonia > <https://drive.google.com/file/d/0B72FkOYOSgORVmcZXemVlcUpqUU0/view?pli=1>

06.10.2014

Presenting BBMRI-ERIC: Gateway for Health at the Balkan Biobanking Preparatory Meeting in Split, Croatia

17.10.2014

Presenting BBMRI-ERIC: Gateway to Health at the RDA Europe Workshop about Data Sharing and Interoperability meeting in Brussels, Belgium
 > <https://europe.rd-alliance.org/events/rda-europe-workshop-about-data-sharing-and-interoperability-17th-october-2014-brussels>

24.10.2014

Presenting “Attacking the Biobank Bottleneck” at the ESBB meeting in Leipzig, Germany
 > <http://www.esbb.org/leipzig/programme.html>

04.11.2014

Presenting BBMRI-ERIC at the UK Biobank Ethics and Governance Council conference in London, United Kingdom
 > <https://bioshare.eu/content/uk-bio-bank-ethics-and-governance-council-conference>

18.11.2014

Presenting BBMRI-ERIC: Gateway for Health at the Biobanking: A gateway for Health Seminar in Brussels, Belgium > <http://www.iscintelligence.com/event.php?id=244#agenda>

03.12.2014

Presenting BBMRI-ERIC: A new opportunity to promote European Translation Medicine at the European Research Infrastructure in Biomedical Sciences meeting in Rome, Italy
 > http://www.iss.it/binary/iatr/cont/Programma_3_12_2014.pdf

18.11.2014

Presenting BBMRI-ERIC at the European Parliament Breakfast Seminar in Brussels, Belgium
 > <http://www.iscintelligence.com/event.php?id=244#agenda>

Markus Pasterk**17.06.2014**

Presenting “BBMRI.at – the example of a small country” at the First Polish Biobanking Conference in Warsaw, Poland > <http://www.wum.edu.pl/files/uczelnia/biobankowanie.pdf>

10.07.2014

Presenting BBMRI-ERIC Introduction at the NCID meeting 2014 in Lyon, France
 > <http://www.i-pri.org/ncid-2014/>

15.09.2014

Presenting Common Service Tender Process at the WG4 Meeting Clinical Biobanks in Berlin, Germany
 > http://bbmri-eric.eu/events/-/asset_publisher/wiZaUl5ie56w/content/bbmri-eric-clinical-biobanking-workshop

24.10.2014

Presenting BBMRI-ERIC: how RI can enhance funding at the ESBB Meeting; lecture on funding of biobanking in Leipzig, Germany
 > <http://www.esbb.org/leipzig/programme.html>

06.10.2014

Presenting BBMRI-ERIC: how to join at the Balkan Biobanking Preparatory Meeting in Split, Croatia

07.11.2014

Presenting Introduction into BBMRI-ERIC at the LEOPOLDINA 3rd expert hearing meeting in Berlin, Germany

> <http://www.leopoldina.org/en/events/>

17.10.2014

Presenting „BBMRI-ERIC and China” at the Discuss BBMRI-ERIC - China collaboration in Shanghai, China

> <http://www.tecan.com/platform/apps/event/detail.asp?EventId=748&MenuID=3783&ID=7943&-Menu=1&Item=29.1>

18.10.2014

Presenting “BBMRI-ERIC and China: transnational collaboration as a gateway for better health in our nations” Participate in the 3rd Beijing B. on behalf of Jan-Eric Litton in Beijing, China

> <http://www.tecan.com/platform/apps/event/detail.asp?EventId=748&MenuID=3783&ID=7943&-Menu=1&Item=29.1>

25.11.2014

Presenting BBMRI-ERIC and RD: a platform for sustainability at the EPIRARE 3rd International Workshop in Rome, Italy

> http://www.epirare.eu/_meet/20141124/EPIRARE_Workshop_final%20program.pdf

Michaela Th. Mayrhofer**07.05.2015**

Presentation on BBMRI-ERIC at the ELSI 2.0 Ethics at Crossroads Conference in Indianapolis/USA

> <http://bioethics.iu.edu/n/elsireg-may7>

24.09.2014

Presentation on BBMRI-ERIC Poster at the HandsOn Biobanks Congress in Helsinki, Finland

> <http://www.ncri.org.uk/events/handson-bio-banks-2014>

18.11.2014

Presentation on BBMRI-ERIC Poster at the European Parliament Breakfast Seminar in Brussels, Belgium

> <http://www.iscintelligence.com/event.php?id=244#agenda>

**MEETINGS & SEMINARS
(CO-)ORGANISED BY BBMRI-ERIC****18.11.2014**

BBMRI-ERIC: A Gateway for Health Seminar in Brussels/Belgium.

07.10.2014

Media Briefing with Drug Discovery World, European Federation of Pharmaceutical Industries and Associations, Pharmatimes, Times Higher Education, Scrip, Research Europe, The Pharmaceutical Journal and Science in London/UK.

24. - 25.09.2014

HandsOn Biobanks: From Biobanks to Medical Innovations, in Helsinki/Finland.

SCIENTIFIC PUBLICATIONS

Bravo et al. (2015), Developing a guideline to standardize the citation of bioresources in journal articles (CoBRA), in: BMC Medicine, 13:33

Fransson et al. (2015), Toward a common language for biobanking, in: European Journal of Human Genetics, 23: 22-28.

van Ommen et al. (2014), BBMRI-ERIC as a resource for pharmaceutical and life science industries: the development of biobank-based Expert Centres, in: European Journal of Human Genetics: 1-8.

Reichel et al. (2014), ERIC: A new governance tool for Biobanking, in: European Journal of Human Genetics, 22: 1055-1057.

PRESS REPORTS, SUCCESS STORIES & PRESS RELEASES

(BBMRI-ERIC as topic or referenced)

Medizin-Aspekte.de: Nationales Biobanken-Symposium stärkt die Zusammenarbeit in der Biobanken-Forschung (3 December 2014)

ISS.it: Lo stato dell'arte delle Infrastrutture per la Ricerca traslazionale in un convegno all'ISS (28 November 2014)

WHO.int: A call for global governance of biobanks (24 November 2014)

Nature.com: BBMRI-ERIC as a resource for pharmaceutical and life science industries: the development of biobank-based Expert Centres (19 November 2014)

QuotidianoSanita.it: Conferenza Stato-Regioni/1. Il testo del Piano nazionale malattie rare 2013-2016 (13 October 2014)

Research Europe: BBMRI-Eric: The European hub for biobanks (10 October 2014)

ScienceDirect.com: The locked genomes: A perspective from Arabia (28 September 2014)

Lääkärilehti.fi: Biopankkien yhteistyö tuo

mahdollisuuksia potilaiden yksilölliseen hoitoon (25 September 2014)

Botenstoff, Auf dem Weg zu einer personalisierten Medizin (11 September 2014)

THL.fi: Cooperation between biobanks creates basis for personalised medicine (24 September 2014)

ScienceDirect.com: Privacy Threat Modeling for Emerging BiobankClouds (15 September 2014)

EUAgenda: Hands On Biobanks (September 2014)

Dods EU Monitoring: Stakeholder Bullet, European Parliament (September 2014)

Nature Calendar: Hands On Biobanks (September 2014)

Botenstoff, Forum Alpbach spezial. BBMRI-ERIC (23 July 2014)

PR Inside, BBMRI-ERIC welcomes the Italian Presidency (9 July 2014)

Cordis, BBMRI-ERIC (8 July 2014)

HEP info.net, BBMRI-ERIC (8 July 2014)

Observatorio del Plastico, BBMRI-ERIC (8 July 2014) FFG Success Story. Biobanken Europas ziehen an einem Strang (8 July 2014)

Biorepositoryhub, BBMRI-ERIC report highlights the need for biobanks to engage with the public (1 July 2014)

H2020 Newsroom Editor: Biospecimens beyond Borders (1 July 2014)

Le Monde: Les biobanques, l'outil d'une médecine sur-mesure (16 June 2014)

WEB AND THE NEW MEDIA

Web: www.bbmri-eric.eu (*on spot publishing*)
e-Newsflash/Mailchimp (*monthly, since July 2014*),
2938 subscribers

Twitter & LinkedIn (*on-spot publishing, since March 2015*), 42 and 79 followers respectively
Biobanks Europe Newsletter (*quarterly, pdf & print*)

**OVERVIEW TABLE OF PLANNED
AND ACTUAL PM DISTRIBUTION OF BBMRI-ERIC HQ STAFF**

Work Stream / Function	DG		AD		SPM		LAW		ITM	
Target	PLAN	ACTUAL	PLAN	ACTUAL	PLAN	ACTUAL	PLAN	ACTUAL	PLAN	ACTUAL
WS 1.1 CEMO	0,5	2,82	4	6,03	1	1,79	1		0,5	
WS 2.1 HandsOn	0,25	0,06			0,25	0,11				
WS 2.2 Communication	0,5	0,13	0,5	0,08	2	1,01			0,25	
WS 2.3 Stakeholder	1	2,94	0,5	2,33	0,5	0,80	0,5			
WS 2.4 Education			2							
WS 2.5 Retreat	0.25	0,13		0,21	0,25	0,48				
WS 2.6 Webinars					0,25				0,25	
WS 2.7 Newsletter	0,25				1,5					
WS 3.1 CS ELSI	0,5	covered at WS2.3	0,5	covered at WS2.3	1	covered at WS2.3	1			
WS 3.2 CS IT	1	covered at WS2.3							1,25	
WS 3.3 CS RD	0,5	covered at WS2.3	0,5	covered at WS2.3	0,25	covered at WS2.3	0,5			
WS 3.4 CS SFS	0,5	covered at WS2.3	0,5	covered at WS2.3	0,5	covered at WS2.3	0,5			
WS 3.5 EVA	0,25		0,5	0,05			0,5			
WS 4.1 Fundraising	1	3,59	1	2,27	2	6,65	0,25			
WS 5.1 QMS	0,5	0,06	0,5	0,03						
WS 5.2 Partner Charter										
WS 5.3 Self Evaluation										
WS 6.1 Expert Centre	0,5		0,5		0,5		0,5			
WS 7.1 Biobank Catalogue	1				1				1	
WS 7.2 BioBankCloud	0,5	0,13							0,5	
WS 7.3 CoBiBa	0,5	0,13				0,16			0,5	
WS 8.1 MIABIS	0,5								0,5	
WS 8.2 Lexicon	0,25						0,25		0,25	
Total in 2014	10	10	11	11	11	11	5	0	5	0

Work Stream / Function	QUM		F/PA		SEC		CA		Subtotal	
Target	PLAN	ACTUAL	PLAN	ACTUAL	PLAN	ACTUAL	PLAN	ACTUAL	PLAN	ACTUAL
WS 1.1 CEMO	0,5	1,14	7	3,43	7	7			21,5	22,21
WS 2.1 HandsOn				0,13					0,5	0,30
WS 2.2 Communication				0,21				2	3,25	3,43
WS 2.3 Stakeholder		0,06							2,5	6,13
WS 2.4 Education									2	0
WS 2.5 Retreat		0,11		0,26					0,25	1,19
WS 2.6 Webinars									0,5	0
WS 2.7 Newsletter									1,75	0
WS 3.1 CS ELSI									3	covered at WS2.3
WS 3.2 CS IT									2,25	covered at WS2.3
WS 3.3 CS RD									1,75	covered at WS2.3
WS 3.4 CS SFS									2	covered at WS2.3
WS 3.5 EVA				0,03					1,25	0,08
WS 4.1 Fundraising	0,5	0,03		0,44					4,75	12,98
WS 5.1 QMS	3,5	0,67							4,5	0,76
WS 5.2 Partner Charter									0	0
WS 5.3 Self Evaluation	0,5								0,5	0
WS 6.1 Expert Centre									2	0
WS 7.1 Biobank Catalogue									3	0
WS 7.2 BioBankCloud									1	0,13
WS 7.3 CoBiBa									1	0,29
WS 8.1 MIABIS									1	0
WS 8.2 Lexicon									0,75	0
Total in 2014	5	2	7	4,50	7	7	0	2		

IMPRINT

PHILOSOPHY, NATURE AND PURPOSE OF BUSINESS:

The Biobanking and BioMolecular resources Research Infrastructure - European Research Infrastructure Consortium (BBMRI-ERIC) is designed to facilitate the joint establishment and operation of research infrastructures of European interest and beyond. The ERIC status allows pulling together biobanks and biomolecular resources into a pan-European facility and providing access to collections of partner biobanks and biomolecular resources, their expertise and services on a non-economic basis. BBMRI-ERIC is established for an unlimited period of time.

PUBLISHER: Jan-Eric Litton

LEGAL ADDRESS:

BBMRI-ERIC

Neue Stiftingtalstrasse 2/B/6

8010 Graz

AUSTRIA

Phone: +43-316-34 99 17-0

Fax: +43-316-34 99 17-99

Email: contact@bbmri-eric.eu

Website: www.bbmri-eric.eu

EDITORIAL BOARD:

Jan-Eric Litton, Nadja Palko, Michaela Th. Mayrhofer,
Markus Pasterk, Ulrike Rohrer

LAYOUT: www.ganzGustav.at

SUBSCRIBE TO OUR NEWSLETTER

& NEWSFLASH AT: www.bbmri-eric.eu

FOLLOW US ON TWITTER: @BBMRIERIC

CONNECT WITH US ON LINKEDIN: BBMRI-ERIC

ISSN: 2412-5652



